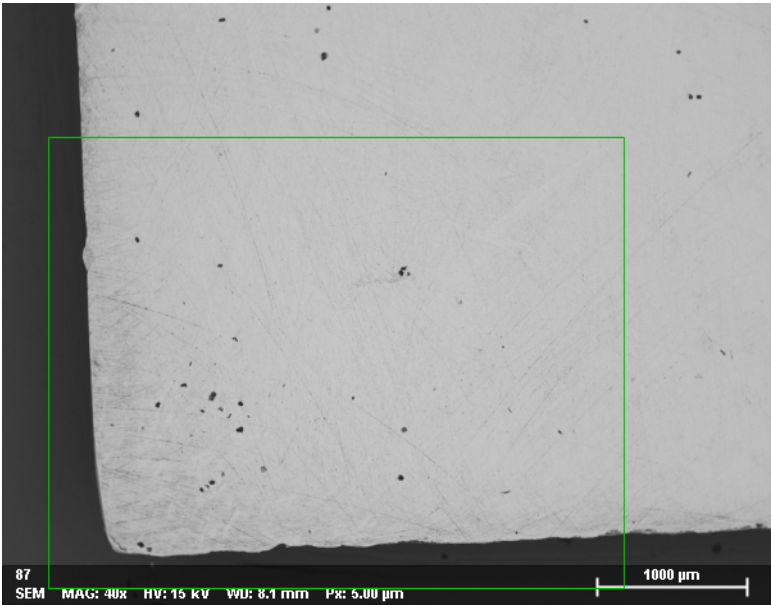
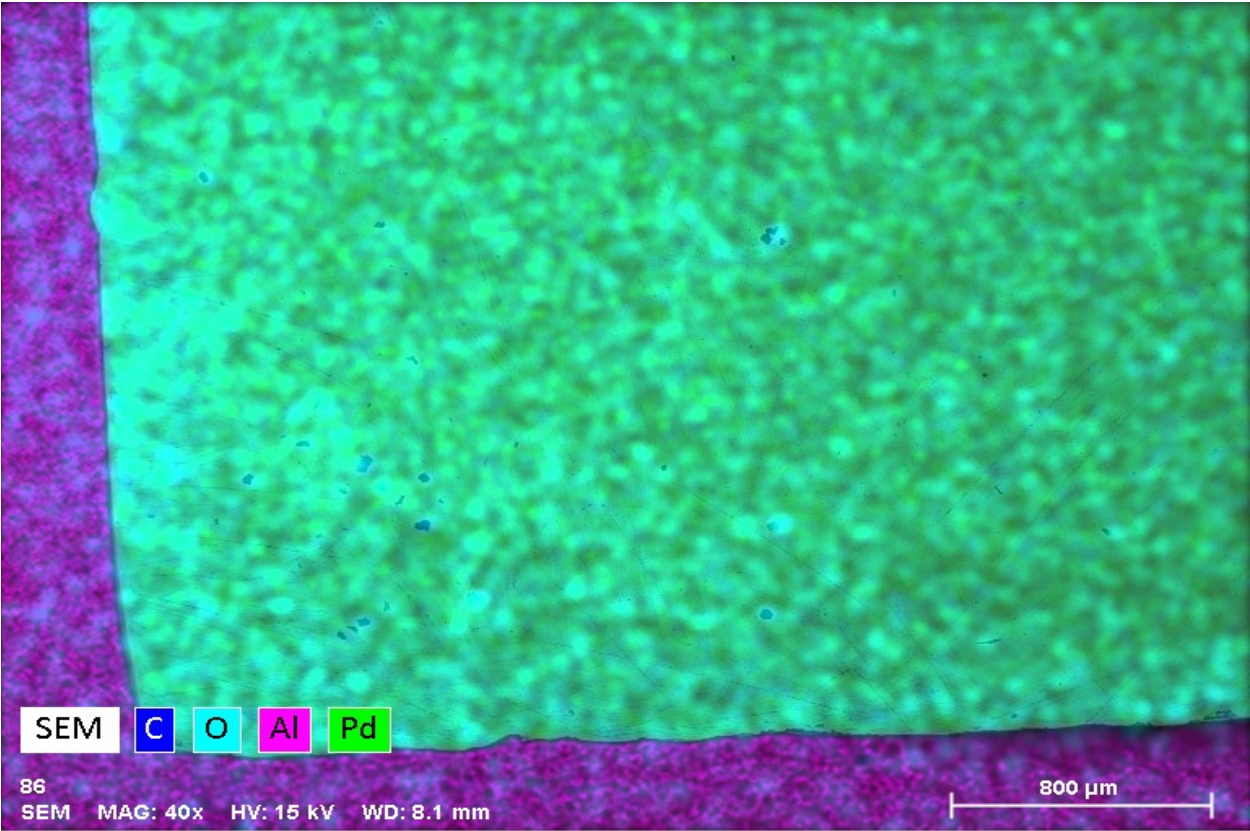


Ni Mesh After Burnishing With Pd

© 2019 Alan Goldwater



87	SEM	MAG: 40x	HV: 15 kV	WD: 8.1 mm	Px: 5.00 µm
Name	Date	Time	HV [kV]	Mag	WD [mm]
87	8/15/2019	2:06:08 PM	15.0 keV	40x	8.1 mm



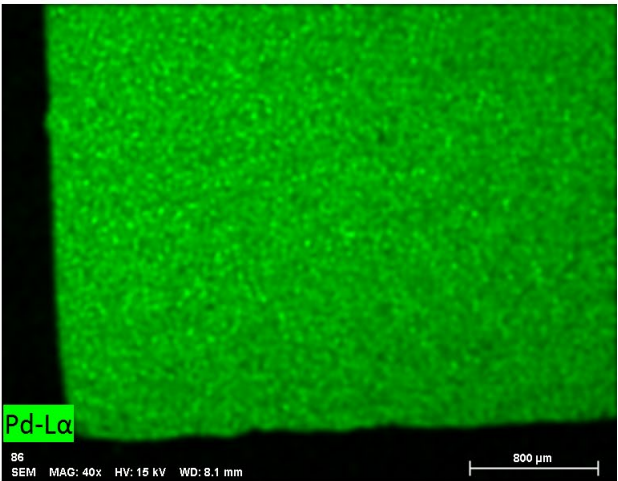
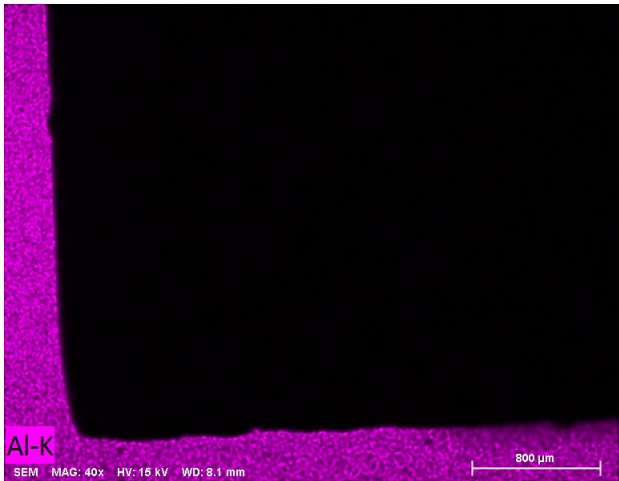
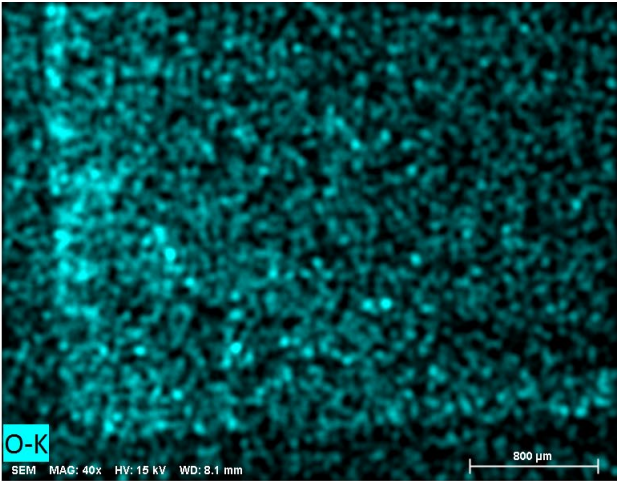
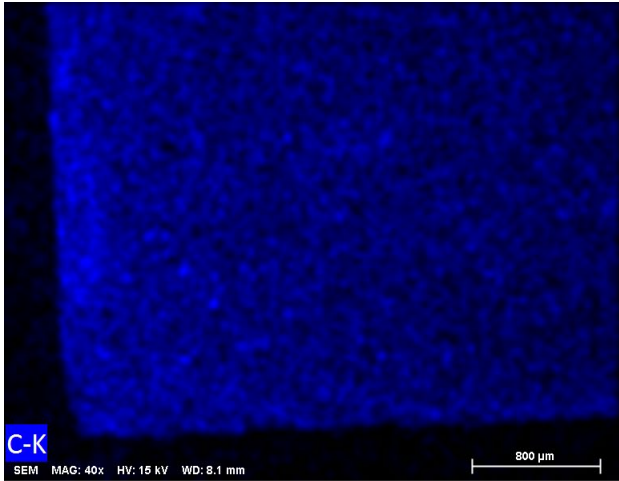
SEM C O Al Pd

86

SEM MAG: 40x HV: 15 kV WD: 8.1 mm

Name	Date	Time	HV [kV]	Mag	WD [mm]
86	8/15/2019	2:06:31 PM	15.0 keV	40x	8.1 mm

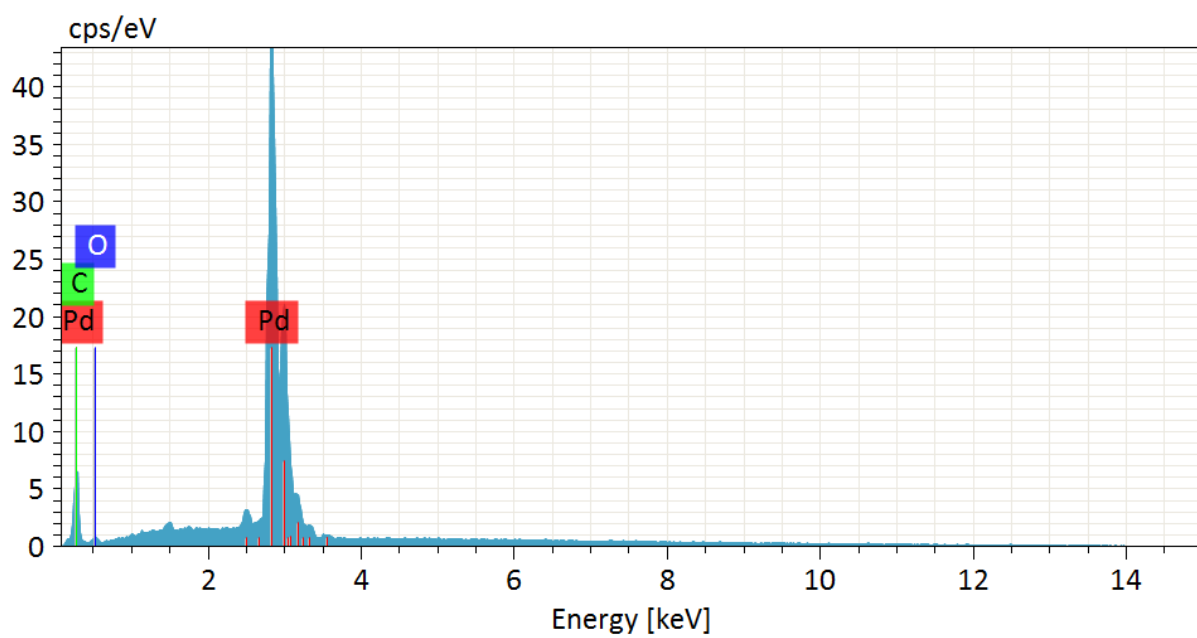
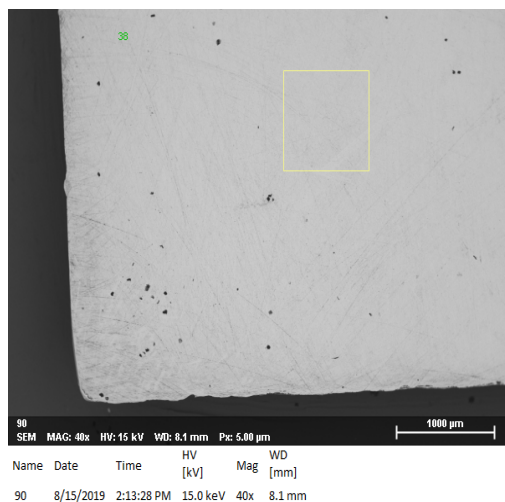
Ni Mesh After Burnishing With Pd  
© 2019 Alan Goldwater



Date	Time	HV [kV]	Mag	WD [mm]
8/15/2019	2:09:38 PM	15.0 keV	40x	8.1 mm

## Ni Mesh After Burnishing With Pd

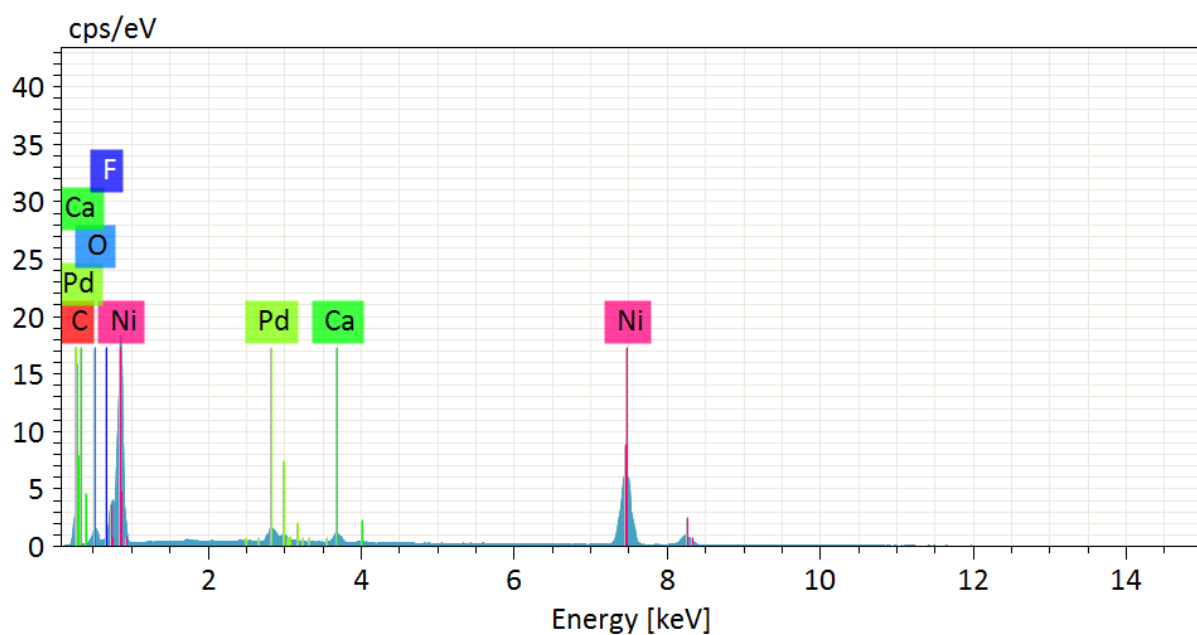
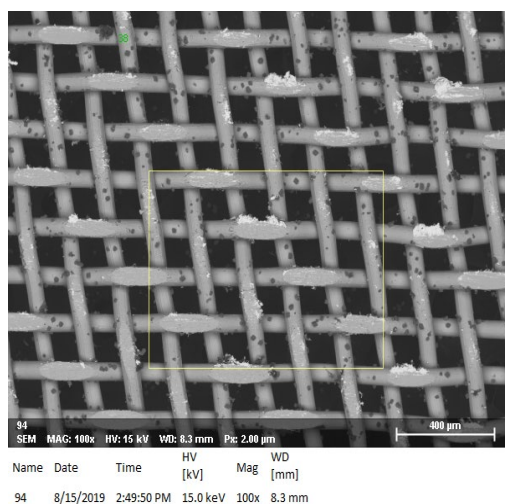
© 2019 Alan Goldwater



Spectrum	C	O	Pd
38	2.30	1.05	96.65

## Ni Mesh After Burnishing With Pd

© 2019 Alan Goldwater

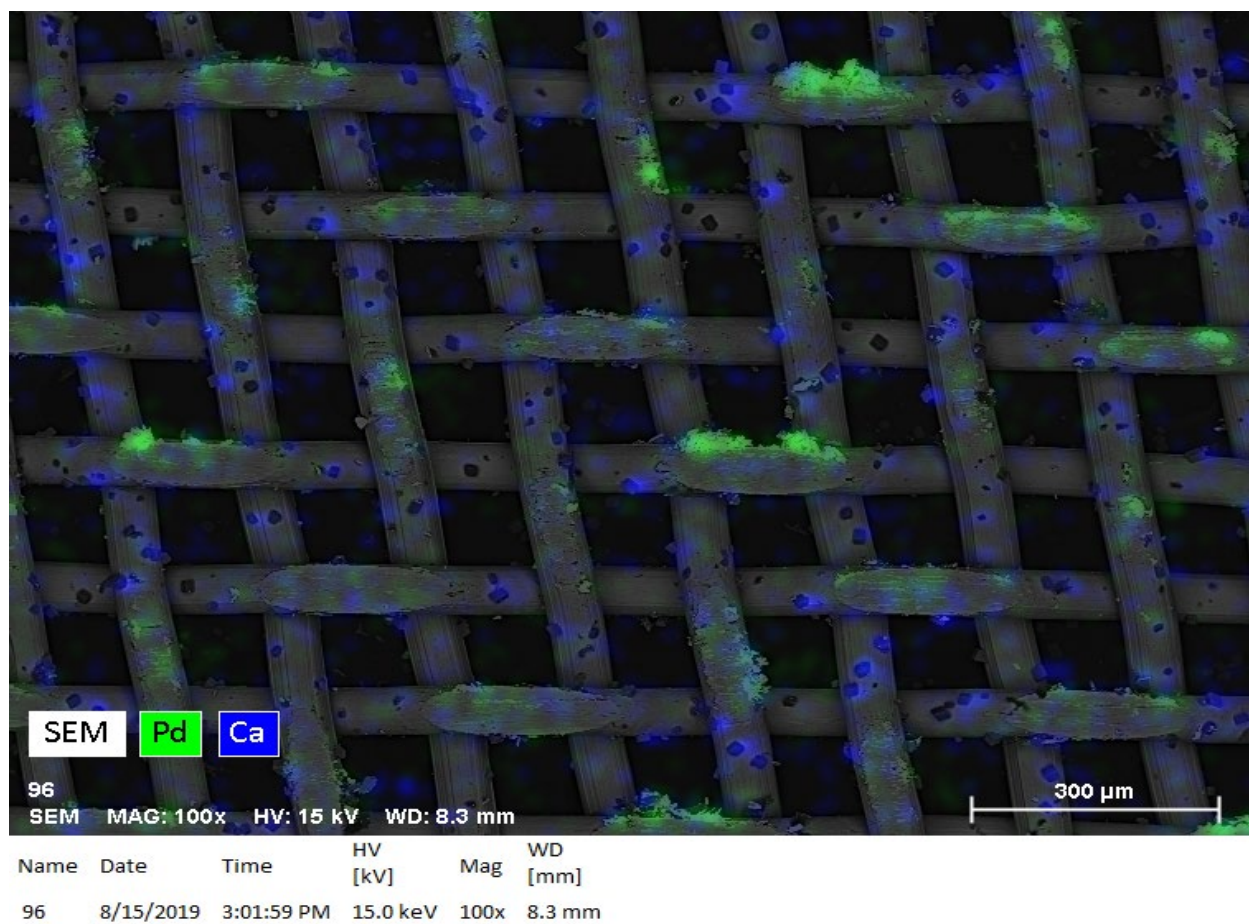
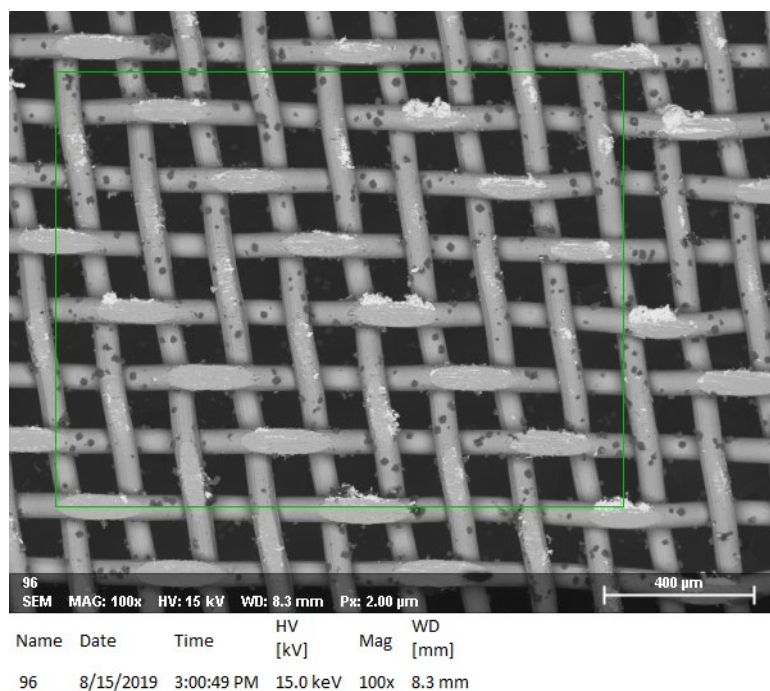


Spectrum	C	O	F	Ca	Ni	Pd
38	19.76	4.59	1.24	1.98	67.10	5.33



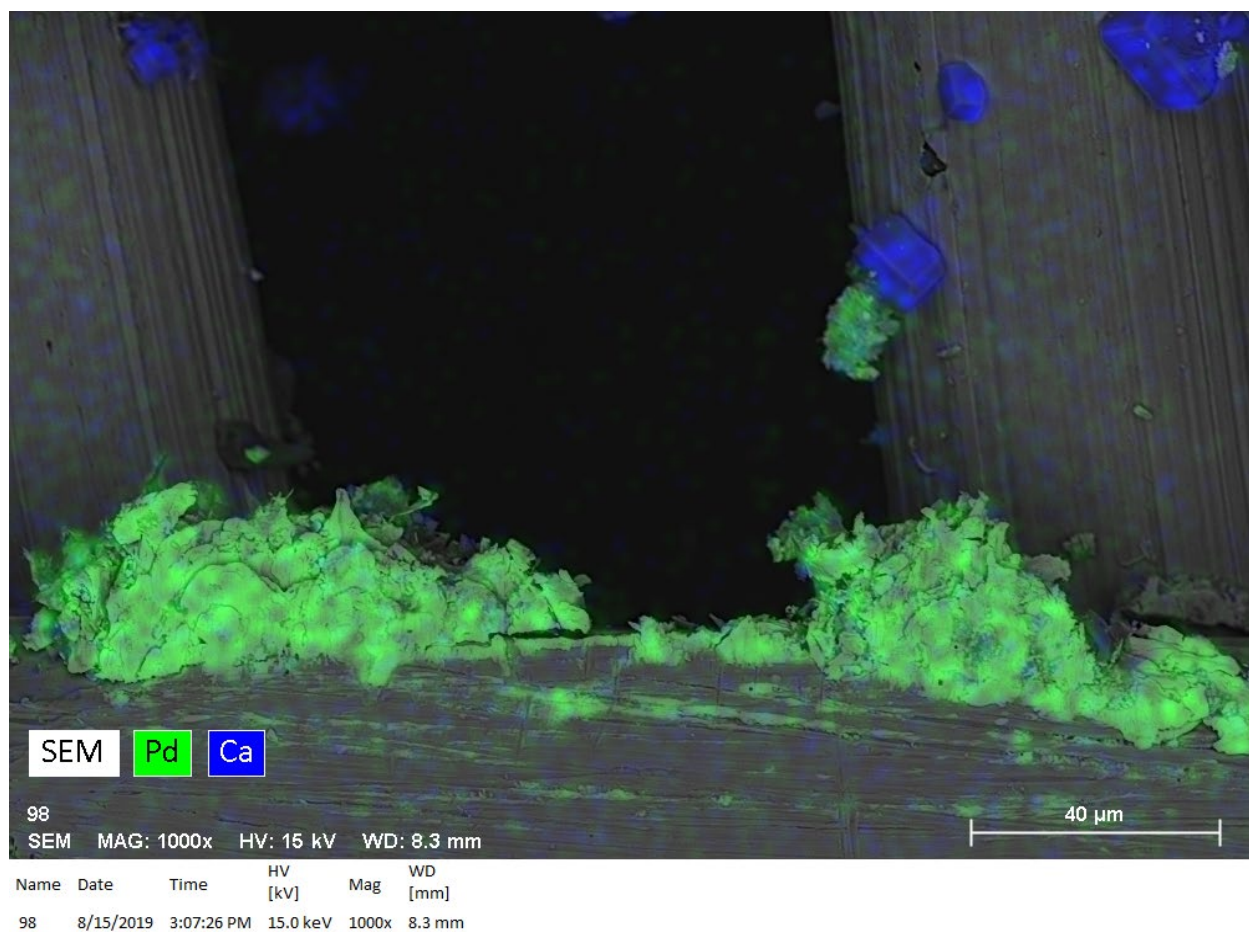
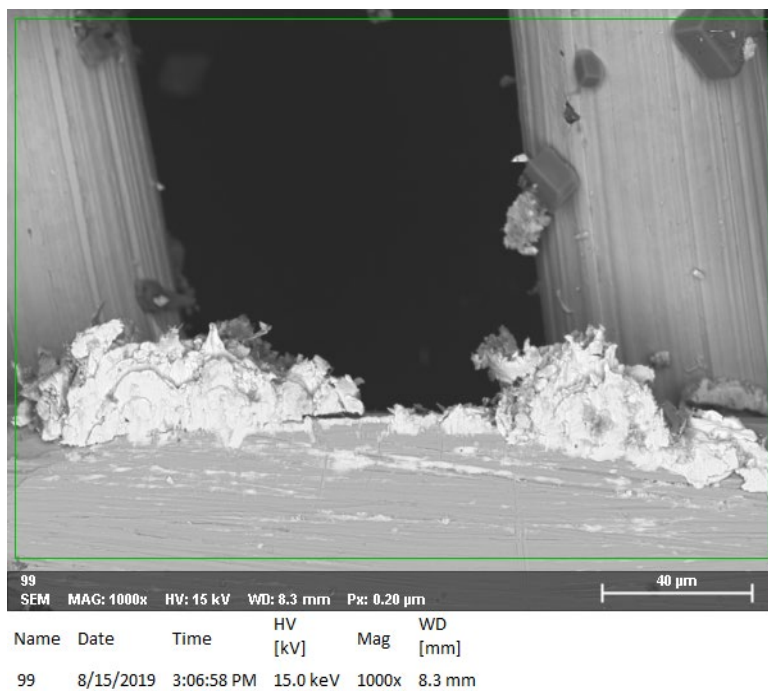
## Ni Mesh After Burnishing With Pd

© 2019 Alan Goldwater



## Ni Mesh After Burnishing With Pd

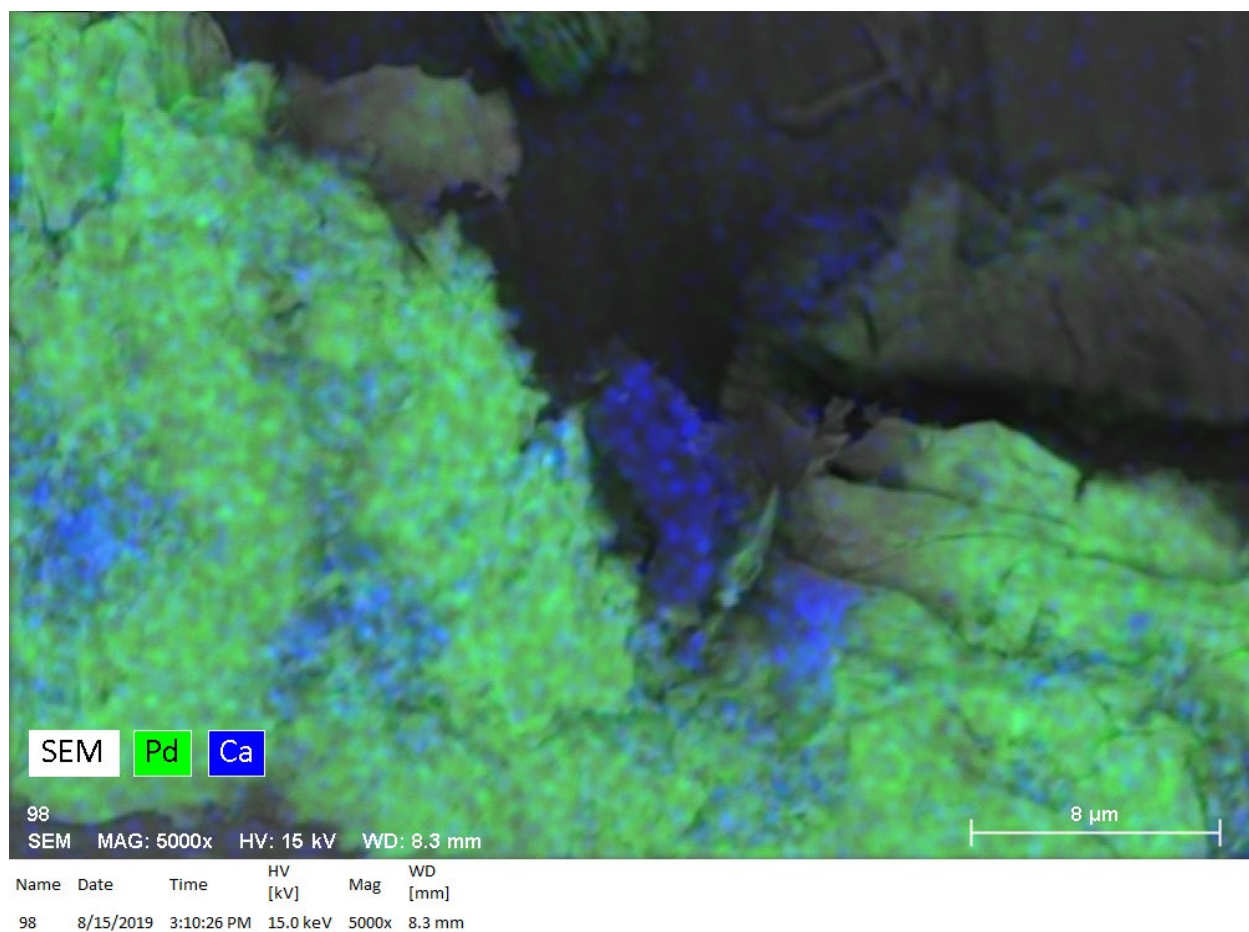
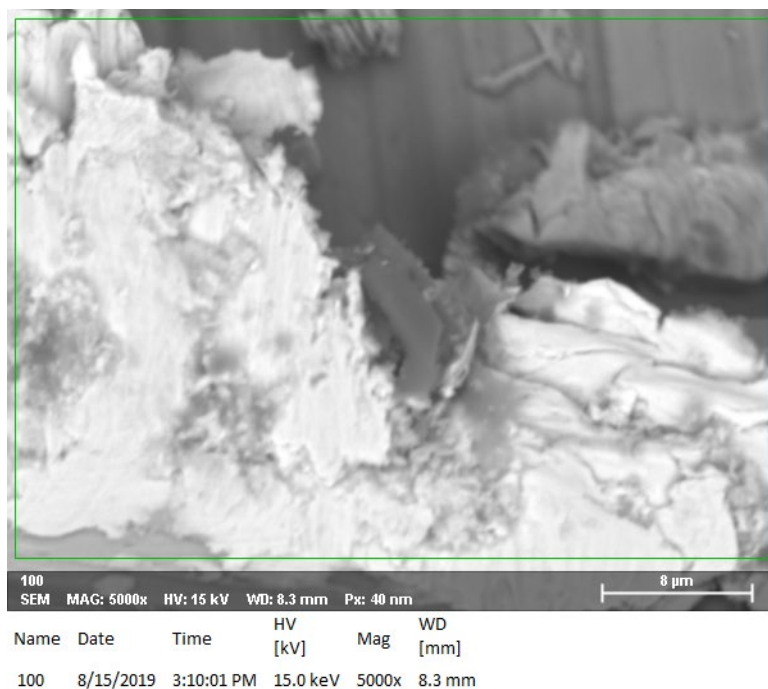
© 2019 Alan Goldwater

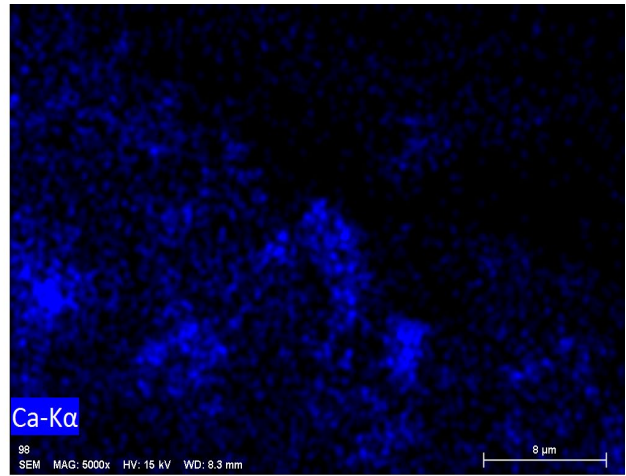
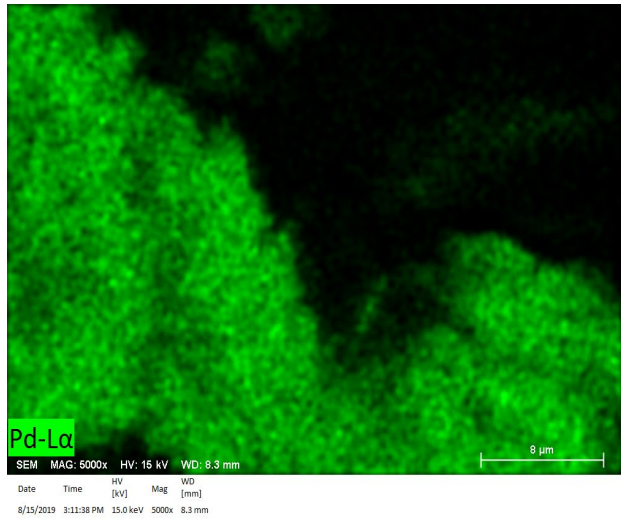




## Ni Mesh After Burnishing With Pd

© 2019 Alan Goldwater

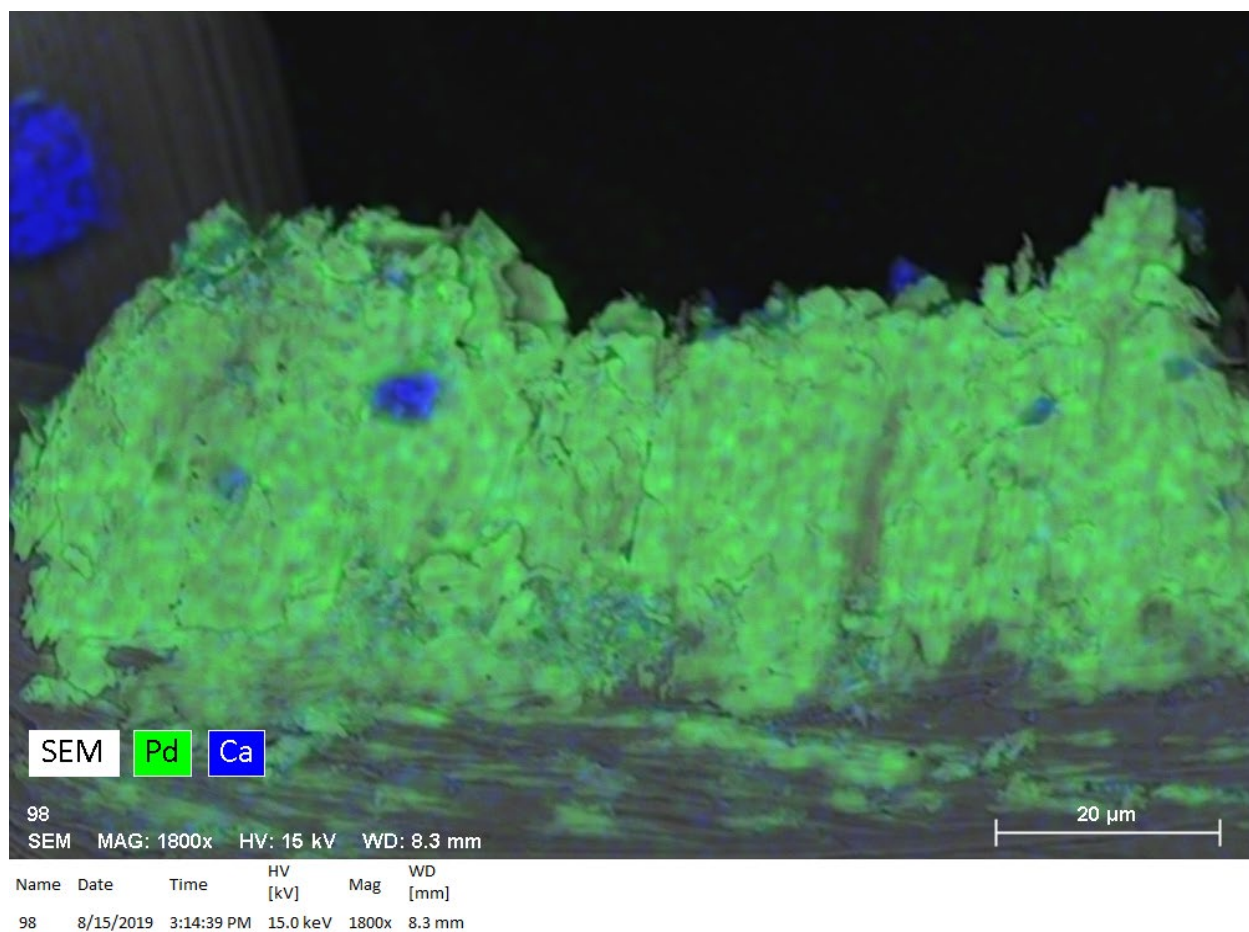
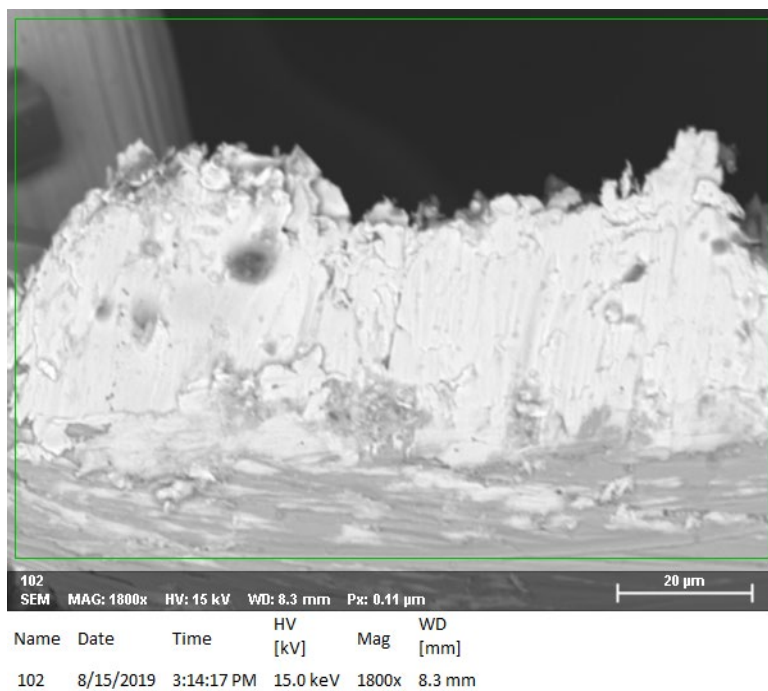






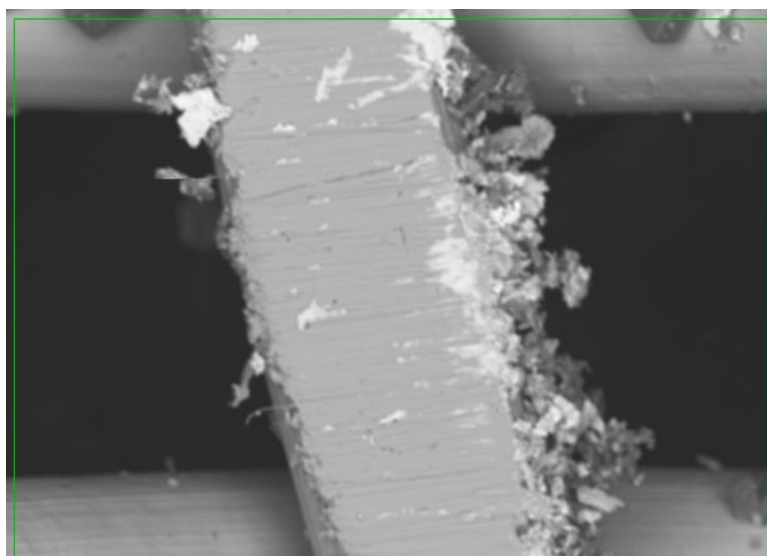
## Ni Mesh After Burnishing With Pd

© 2019 Alan Goldwater

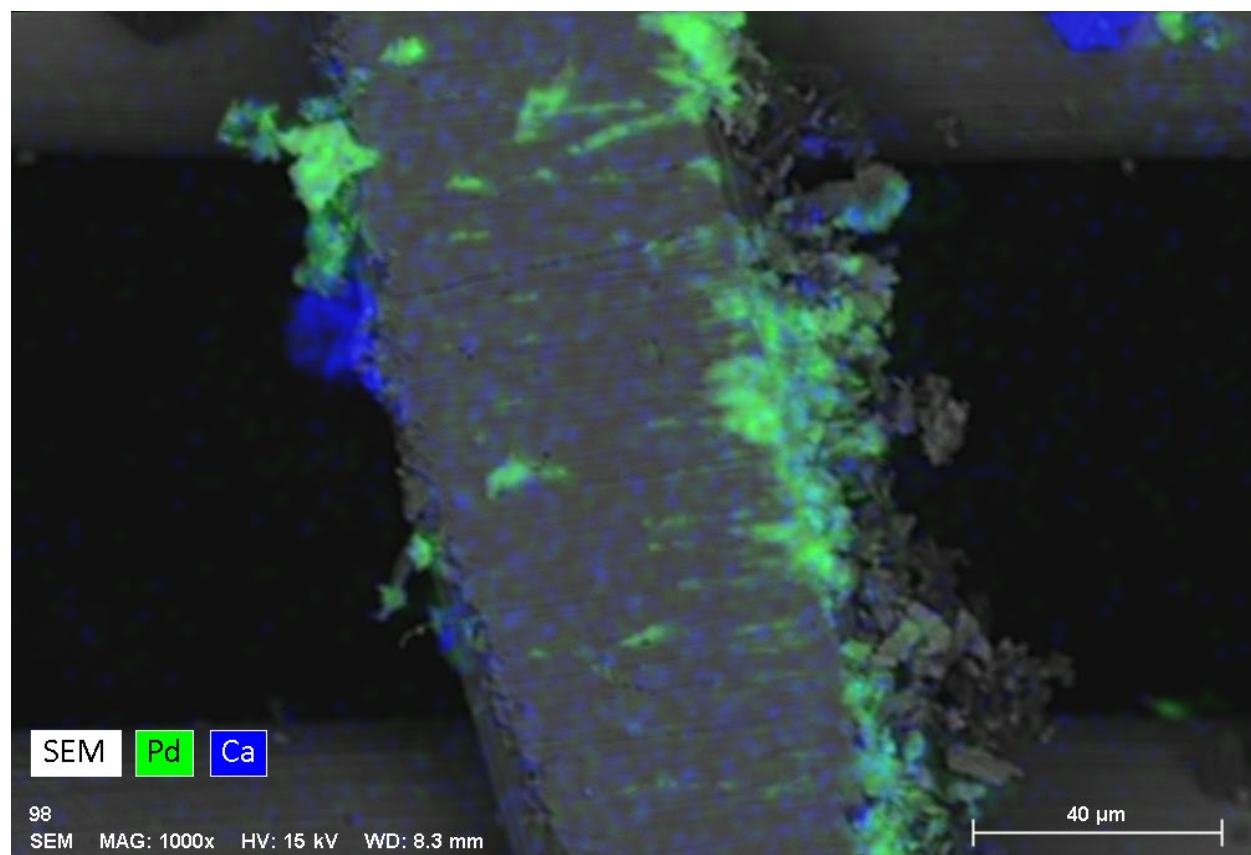


## Ni Mesh After Burnishing With Pd

© 2019 Alan Goldwater



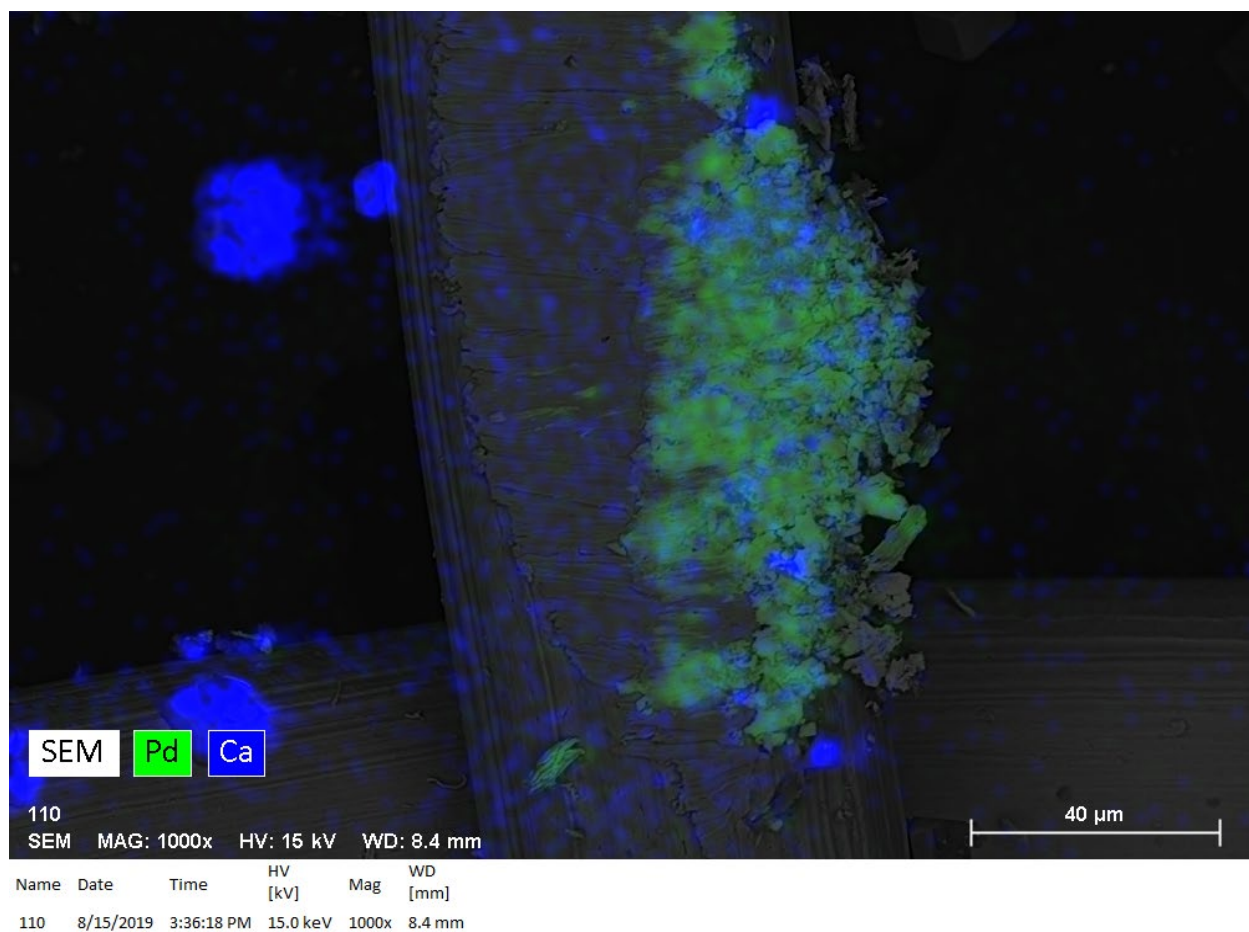
103	SEM	MAG: 1000x	HV: 15 kV	WD: 8.3 mm	Px: 0.20 µm	40 µm
Name	Date	Time	HV [kV]	Mag	WD [mm]	
103	8/15/2019	3:18:28 PM	15.0 keV	1000x	8.3 mm	



98	SEM	MAG: 1000x	HV: 15 kV	WD: 8.3 mm	
Name	Date	Time	HV [kV]	Mag	WD [mm]
98	8/15/2019	3:18:48 PM	15.0 keV	1000x	8.3 mm

## Ni Mesh After Burnishing With Pd

© 2019 Alan Goldwater





Ni Mesh After Burnishing With Pd  
© 2019 Alan Goldwater

