

Cite as: L. Zhang *et al.*, *Science*
10.1126/science.abb3405 (2020).

Crystal structure of SARS-CoV-2 main protease provides a basis for design of improved α -ketoamide inhibitors

Linlin Zhang^{1,2}, Daizong Lin^{1,3}, Xinyuanyuan Sun^{1,2}, Ute Curth⁴, Christian Drosten⁵,
Lucie Sauerhering^{6,7}, Stephan Becker^{6,7}, Katharina Rox^{8,9}, Rolf Hilgenfeld^{1,2*}

¹Institute of Biochemistry, Center for Structural and Cell Biology in Medicine, University of Lübeck, 23562 Lübeck, Germany. ²German Center for Infection Research (DZIF), Hamburg-Lübeck-Borstel-Riems Site, University of Lübeck, 23562 Lübeck, Germany. ³Changchun Discovery Sciences Ltd., 789 Shunda Road, Changchun, Jilin 130012, China. ⁴Institute for Biophysical Chemistry, Hannover Medical School, 30625 Hannover, Germany. ⁵Institute of Virology, Charité Universitätsmedizin Berlin, 10117 Berlin, Germany. ⁶Institute of Virology, University of Marburg, 35043 Marburg, Germany. ⁷German Center for Infection Research (DZIF), Marburg-Gießen-Langen Site, University of Marburg, 35043 Marburg, Germany. ⁸Department of Chemical Biology, Helmholtz Center for Infection Research (HZI), Inhoffenstraße 7, 38124 Braunschweig, Germany. ⁹German Center for Infection Research (DZIF), Hannover-Braunschweig Site, Helmholtz Center for Infection Research, 38124 Braunschweig, Germany.

*Corresponding author. Email: rolf.hilgenfeld@uni-luebeck.de

The COVID-19 pandemic caused by SARS-CoV-2 is a global health emergency. An attractive drug target among coronaviruses is the main protease (M^{pro} , $3CL^{\text{pro}}$), due to its essential role in processing the polyproteins that are translated from the viral RNA. We report the X-ray structures of the unliganded SARS-CoV-2 M^{pro} and its complex with an α -ketoamide inhibitor. This was derived from a previously designed inhibitor but with the P3-P2 amide bond incorporated into a pyridone ring to enhance the half-life of the compound in plasma. Based on the structure, we developed the lead compound into a potent inhibitor of the SARS-CoV-2 M^{pro} . The pharmacokinetic characterization of the optimized inhibitor reveals a pronounced lung tropism and suitability for administration by the inhalative route.

In December 2019, a new coronavirus caused an outbreak of pulmonary disease in the city of Wuhan, the capital of Hubei province in China, and has since spread globally (1, 2). The virus has been named SARS-CoV-2 (3), because the RNA genome is about 82% identical to the SARS coronavirus (SARS-CoV); both viruses belong to clade b of the genus *Betacoronavirus* (1, 2). The disease caused by SARS-CoV-2 is called COVID-19. Whereas at the beginning of the outbreak, cases were connected to the Huanan seafood and animal market in Wuhan, efficient human-to-human transmission led to exponential growth in the number of cases. On March 11, the World Health Organization (WHO) declared the outbreak a pandemic. As of March 15, there are >170,000 cumulative cases globally, with a ~3.7% case-fatality rate.

One of the best characterized drug targets among coronaviruses is the main protease (M^{pro} , also called $3CL^{\text{pro}}$) (4). Along with the papain-like protease(s), this enzyme is essential for processing the polyproteins that are translated from the viral RNA (5). The M^{pro} operates at no less than 11 cleavage sites on the large polyprotein 1ab (replicase 1ab, ~790 kDa); the recognition sequence at most sites is Leu-Gln↓(Ser,Ala,Gly) (↓ marks the cleavage site). Inhibiting the activity of this enzyme would block viral replication. Since

no human proteases with a similar cleavage specificity are known, inhibitors are unlikely to be toxic.

Previously, we designed and synthesized peptidomimetic α -ketoamides as broad-spectrum inhibitors of the main proteases of betacoronaviruses and alphacoronaviruses as well as the 3C proteases of enteroviruses (6). The best of these compounds (**11r**; Fig. 1) showed an EC_{50} of 400 picomolar against MERS-CoV in Huh7 cells as well as low micromolar EC_{50} values against SARS-CoV and a whole range of enteroviruses in various cell lines, although the antiviral activity seemed to depend to a great extent on the cell type used in the experiments (6). In order to improve the half-life of the compound in plasma, we modified **11r** by hiding the P3 - P2 amide bond within a pyridone ring (Fig. 1, green circles), in the expectation that this might prevent cellular proteases from accessing this bond and cleaving it. Further, to increase the solubility of the compound in plasma and to reduce its binding to plasma proteins, we replaced the hydrophobic cinnamoyl moiety by the somewhat less hydrophobic Boc group (Fig. 1, red circles) to give **13a** (see scheme S1 for synthesis).

In order to examine whether the introduced pyridone ring is compatible with the three-dimensional structure of

the target, we determined the crystal structure, at 1.75 Å resolution, of the M^{pro} of SARS-CoV-2 (Fig. 2). The three-dimensional structure is highly similar to that of the SARS-CoV M^{pro}, as expected from the 96% sequence identity (see fig. S7); the r.m.s. deviation between the two free-enzyme structures is 0.53 Å for all Cα positions (comparison between SARS-CoV-2 M^{pro} structure and SARS-CoV M^{pro}, PDB entry 2BX4 (7)). The chymotrypsin- and picornavirus 3C protease-like domains I and II (residues 10-99 and 100-182, respectively) are six-stranded antiparallel β-barrels that harbor the substrate-binding site between them. Domain III (residues 198-303), a globular cluster of five helices, is involved in regulating dimerization of the M^{pro}, mainly through a salt-bridge interaction between Glu²⁹⁰ of one protomer and Arg⁴ of the other (8). The tight dimer formed by SARS-CoV-2 M^{pro} has a contact interface, predominantly between domain II of molecule A and the NH₂-terminal residues (“N-finger”) of molecule B, of ~1394 Å², with the two molecules oriented perpendicular to one another (Fig. 2). Dimerization of the enzyme is necessary for catalytic activity, because the N-finger of each of the two protomers interacts with Glu¹⁶⁶ of the other protomer and thereby helps shape the S1 pocket of the substrate-binding site (9). To reach this interaction site, the N-finger is squeezed in between domains II and III of the parent monomer and domain II of the other monomer. Interestingly, in the SARS-CoV but not in the SARS-CoV-2 M^{pro} dimer, there is a polar interaction between the two domains III involving a 2.60-Å hydrogen bond between the side-chain hydroxyl groups of residue Thr²⁸⁵ of each protomer, and supported by a hydrophobic contact between the side-chain of Ile²⁸⁶ and Thr²⁸⁵ Cγ2. In SARS-CoV-2, the threonine is replaced by alanine (indicated by the black sphere in Fig. 2), and the isoleucine by leucine (see fig. S7). It has previously been shown that replacing Ser²⁸⁴, Thr²⁸⁵, and Ile²⁸⁶ by alanine residues in SARS-CoV M^{pro} leads to a 3.6-fold enhancement of the catalytic activity of the protease, concomitant with a slightly closer packing of the two domains III of the dimer against one another (10). This was accompanied by changes in enzyme dynamics that transmit the effect of the mutation to the catalytic center. Indeed, the Thr²⁸⁵Ala replacement observed in the SARS-CoV-2 M^{pro} also allows the two domains III to approach each other a little closer (the distance between the Cα atoms of residues 285 in molecules A and B is 6.77 Å in SARS-CoV M^{pro} and 5.21 Å in SARS-CoV-2 M^{pro} and the distance between the centers of mass of the two domains III shrinks from 33.4 Å to 32.1 Å). However, the catalytic efficiency of SARS-CoV-2 M^{pro} is only slightly higher, if at all ($k_{\text{cat}}/K_m = 3426.1 \pm 416.9 \text{ s}^{-1}\text{M}^{-1}$) than that of SARS-CoV M^{pro} ($k_{\text{cat}}/K_m = 3011.3 \pm 294.6 \text{ s}^{-1}\text{M}^{-1}$). Further, the estimated K_d of dimer dissociation is the same (~2.5 μM) for the two enzymes, as determined by analytical ultracentrifugation

(fig. S8).

We used this crystal structure to dock the α-ketoamide **13a**; this suggested that the pyridone ring might have some steric clash with the side-chain of Gln189. However, in our previous work (6), we had found Gln189 to be quite flexible and therefore we went ahead with **13a** as a lead. The plasma half-life of this compound in mice was increased ~3-fold compared to **11r** (from 0.3 hours to 1.0 hours), the *in-vitro* kinetic plasma solubility was improved by a factor of ~19 (from 6 μM for **11r** to 112 μM for **13a**) and the thermodynamic solubility by a factor of ~13 (from 41 μM to 530 μM). Binding to mouse plasma protein was reduced from 99% to 97% (many drugs have plasma protein binding of >90%; (11)). However, compared to **11r** ($\text{IC}_{50} = 0.18 \pm 0.02 \text{ μM}$), the structural modification led to some loss of inhibitory activity against the main protease of SARS-CoV-2 ($\text{IC}_{50} = 2.39 \pm 0.63 \text{ μM}$) as well as the 3C proteases (3C^{pro}) of enteroviruses. **11r** was designed for broad-spectrum activity, with the P2 cyclohexyl moiety intended to fill a pocket in the enterovirus 3C^{pro}. The S2 pocket of the betacoronavirus M^{pro} (see Fig. 3) features substantial plasticity enabling it to adapt to the shape of smaller inhibitor moieties (6). To enhance the antiviral activity against betacoronaviruses of clade b (SARS-CoV-2 and SARS-CoV), we sacrificed the goal of broad-spectrum activity and replaced the P2 cyclohexyl moiety of **13a** by the smaller cyclopropyl in **13b** (Fig. 1, blue circles). Here we present X-ray crystal structures in two different crystal forms, at 1.95 and 2.20 Å resolution, of the complex between α-ketoamide **13b** and the M^{pro} of SARS-CoV-2 (Fig. 3). One structure is in space group C2, where both protomers of the M^{pro} dimer are bound by crystal symmetry to have identical conformations, the other is in space group P2₁2₁2₁, where the two protomers are independent of each other and free to adopt different conformations. Indeed, we find that in the latter crystal structure, the key residue Glu¹⁶⁶ adopts an inactive conformation in protomer B (as evidenced by its distance from His¹⁷² and the lack of H-bonding interaction with the P1 moiety of the inhibitor), even though compound **13b** is bound in the same mode as in molecule A. This phenomenon has also been observed with the SARS-CoV M^{pro} (12) and is consistent with the half-site activity described for this enzyme (13). In all copies of the inhibited SARS-CoV-2 M^{pro}, the inhibitor binds to the shallow substrate-binding site at the surface of each protomer, between domains I and II (Fig. 3).

Through the nucleophilic attack of the catalytic Cys¹⁴⁵ onto the α-keto group of the inhibitor, a thiohemiketal is formed in a reversible reaction. This is clearly reflected in the electron density (Fig. 3 inset); the stereochemistry of this chiral moiety is *S* in all copies of compound **13b** in these structures. The oxyanion (or hydroxyl) group of this thiohemiketal is stabilized by a hydrogen bond from His⁴¹,

whereas the amide oxygen of **13b** accepts a hydrogen bond from the main-chain amides of Gly¹⁴³, Cys¹⁴⁵, and partly Ser¹⁴⁴, which form the canonical “oxyanion hole” of the cysteine protease. It is an advantage of the α -ketoamides that their warhead can interact with the catalytic center of the target proteases through two hydrogen bonding interactions (6), rather than only one as with other warheads such as aldehydes (14) or Michael acceptors (15).

The P1 γ -lactam moiety, designed as a glutamine surrogate (15, 16), is deeply embedded in the S1 pocket of the protease, where the lactam nitrogen donates a three-center (bifurcated) hydrogen bond to the main-chain oxygen of Phe¹⁴⁰ (3.20/3.10/3.28 Å; values for the structure in space group C2/space group P2₁2₁ molecule A/space group P2₁2₁ molecule B) and to the Glu¹⁶⁶ carboxylate (3.35/3.33/(3.55) Å), and the carbonyl oxygen accepts a 2.57/2.51/2.81-Å H-bond from the imidazole of His¹⁶³. The P2 cyclopropyl methyl moiety fits snugly into the S2 subsite, which has shrunk by 28 Å³ compared to the complex between compound **13a** with P2 = cyclohexyl methyl and the SARS-CoV M^{pro} (17). The pyridone in the P3 - P2 position of the inhibitor occupies the space normally filled by the substrate's main chain, its carbonyl oxygen accepts a 2.89/2.99/3.00-Å hydrogen bond from the main-chain amide of residue Glu¹⁶⁶. Further, the P3 amide donates a 2.83/2.96/2.87-Å H-bond to the main-chain oxygen of Glu¹⁶⁶. Embedded within the pyridone, the P2 nitrogen can no longer donate a hydrogen bond to the protein (the H-bond prevented from forming would connect the P2 nitrogen and the side-chain oxygen of Gln189; these two atoms are highlighted in fig. S8). However, our previous crystal structures showed that the P2 main-chain amide of the linear α -ketoamides does not make a hydrogen bond with the protein in all cases, so this interaction does not seem to be critical (6). The protecting Boc group on P3 does not occupy the canonical S4 site of the protease (in contrast to the protecting groups of other inhibitors in complex with the SARS-CoV M^{pro} (18)), but is located near Pro¹⁶⁸ (3.81/4.17/3.65 Å; Fig. 3); due to this interaction, the latter residue moves outward by more than 2 Å (compared to the structure of the free enzyme). This contact explains why removing the Boc group as in compound **14b** (Fig. 1, purple circles) weakens the inhibitory potency of this compound by a factor of about 2. Interestingly, there is a space between the pyridone ring of **13b**, the main chain of residue Thr¹⁹⁰, and the side-chain of Gln¹⁸⁹ (smallest distance: 3.6 Å) which is filled by a DMSO molecule in the C2 crystal structure and a water molecule in the P2₁2₁ structure. This suggests that P3 moieties more bulky than pyridone may be accepted here.

Compound **13b** inhibits the purified recombinant SARS-CoV-2 M^{pro} with IC₅₀ = 0.67 ± 0.18 μM. The corresponding IC₅₀ values for inhibition of the SARS-CoV M^{pro} and the

MERS-CoV M^{pro} are 0.90 ± 0.29 μM and 0.58 ± 0.22 μM, respectively. In a SARS-CoV replicon (19), RNA replication is inhibited with EC₅₀ = 1.75 ± 0.25 μM. In human Calu3 cells infected with the novel coronavirus, SARS-CoV-2, an EC₅₀ of 4 - 5 μM is observed, whereas compound **14b** lacking the Boc group is almost inactive (Fig. 4). This suggests that the hydrophobic and bulky Boc group is necessary to cross the cellular membrane and that an even more hydrophobic moiety might be advantageous here, although this may again lead to increased plasma protein binding as observed for the cinnamoyl-containing **11r**.

To assess the absorption - distribution - metabolism - excretion (ADME) properties of the pyridone-containing α -ketoamides, we first investigated compound **13a**. Metabolic stability in mouse and human microsomes was good, with intrinsic clearance rates Cl_{int,mouse} = 32.0 μL/min/mg protein and Cl_{int,human} = 21.0 μL/min/mg protein. This means that after 30 min, around 80% for mouse and 60% for humans, respectively, of residual compound remained metabolically stable. Pharmacokinetic studies in CD-1 mice using the subcutaneous route at 20 mg/kg showed that **13a** stayed in plasma for up to only 4 hours, but was excreted via urine for up to 24 hours. The C_{max} was determined at 334.5 ng/mL and the mean residence time was about 1.6 hours. Although **13a** seemed to be cleared very rapidly from plasma, it was found at 24 hours at 135 ng/g tissue in the lung and at 52.7 ng/mL in broncho-alveolar lavage fluid (BALF) suggesting that it was mainly distributed to tissue. Next, we investigated **13b** for its pharmacokinetic properties in CD-1 mice using the subcutaneous route as well, but at 3 mg/kg. ADME parameters of **13b** were similar to **13a**; in addition, the binding to human plasma proteins was found to be 90%. The C_{max} of **13b** was determined at 126.2 ng/mL. This is around 37% of the C_{max} detected for **13a**, although **13b** dosage was approximately 7-times lower. The mean residence time for **13b** was extended to 2.7 hours and the plasma half-life in mice was 1.8 hours. In addition, **13b** showed a less rapid clearance compared to **13a** (table S3). During the pharmacokinetic study with **13b**, we monitored its lung tissue levels. After 4 hours, around 13 ng/g **13b** were still found in lung tissue. This lung tropism of **13a** and **13b** is beneficial given that COVID-19 affects the lungs. In addition to subcutaneous administration, **13b** was nebulized using an inhalation device at 3 mg/kg. After 24 hours, 33 ng/g **13b** were found in lung tissue. Inhalation was tolerated well and mice did not show any adverse effects, suggesting that this way, direct administration of the compound to the lungs would be possible. Given these favorable pharmacokinetic results, our study provides a useful framework for development of the pyridone-containing inhibitors toward anti-coronaviral drugs.

REFERENCES AND NOTES

1. P. Zhou, X.-L. Yang, X.-G. Wang, B. Hu, L. Zhang, W. Zhang, H.-R. Si, Y. Zhu, B. Li, C.-L. Huang, H.-D. Chen, J. Chen, Y. Luo, H. Guo, R.-D. Jiang, M.-Q. Liu, Y. Chen, X.-R. Shen, X. Wang, X.-S. Zheng, K. Zhao, Q.-J. Chen, F. Deng, L.-L. Liu, B. Yan, F.-X. Zhan, Y.-Y. Wang, G.-F. Xiao, Z.-L. Shi, A pneumonia outbreak associated with a new coronavirus of probable bat origin. *Nature* **579**, 270–273 (2020). [doi:10.1038/s41586-020-2012-7](https://doi.org/10.1038/s41586-020-2012-7) Medline
2. F. Wu, S. Zhao, B. Yu, Y.-M. Chen, W. Wang, Z.-G. Song, Y. Hu, Z.-W. Tao, J.-H. Tian, Y.-Y. Pei, M.-L. Yuan, Y.-L. Zhang, F.-H. Dai, Y. Liu, Q.-M. Wang, J.-J. Zheng, L. Xu, E. C. Holmes, Y.-Z. Zhang, A new coronavirus associated with human respiratory disease in China. *Nature* **579**, 265–269 (2020). [doi:10.1038/s41586-020-2008-3](https://doi.org/10.1038/s41586-020-2008-3) Medline
3. A. E. Gorbalenya, S. C. Baker, R. S. Baric, R. J. de Groot, C. Drosten, A. A. Gulyaeva, B. L. Haagmans, C. Lauber, A. M. Leontovich, B. W. Neuman, D. Penzar, S. Perlman, L. L. M. Poon, D. Samborskiy, I. A. Sidorov, I. Sola, J. Ziebuhr, Severe acute respiratory syndrome-related coronavirus: The species and its viruses – a statement of the Coronavirus Study Group. *Nat. Microbiol.* (2020). [doi:10.1038/s41564-020-0695-z](https://doi.org/10.1038/s41564-020-0695-z)
4. K. Anand, J. Ziebuhr, P. Wadhwani, J. R. Mesters, R. Hilgenfeld, Coronavirus main proteinase (3CL^{pro}) structure: Basis for design of anti-SARS drugs. *Science* **300**, 1763–1767 (2003). [doi:10.1126/science.1085658](https://doi.org/10.1126/science.1085658) Medline
5. R. Hilgenfeld, From SARS to MERS: Crystallographic studies on coronaviral proteases enable antiviral drug design. *FEBS J.* **281**, 4085–4096 (2014). [doi:10.1111/febs.12936](https://doi.org/10.1111/febs.12936) Medline
6. L. Zhang, D. Lin, Y. Kusov, Y. Nian, Q. Ma, J. Wang, A. von Brunn, P. Leyssen, K. Lanko, J. Neyts, A. de Wilde, E. J. Snijder, H. Liu, R. Hilgenfeld, α -Ketoamides as broad-spectrum inhibitors of coronavirus and enterovirus replication: Structure-based design, synthesis, and activity assessment. *J. Med. Chem.* **acs.jmedchem.9b01828** (2020). [doi:10.1021/acs.jmedchem.9b01828](https://doi.org/10.1021/acs.jmedchem.9b01828) Medline
7. J. Tan, K. H. G. Verschueren, K. Anand, J. Shen, M. Yang, Y. Xu, Z. Rao, J. Bigalke, B. Heisen, J. R. Mesters, K. Chen, X. Shen, H. Jiang, R. Hilgenfeld, pH-dependent conformational flexibility of the SARS-CoV main proteinase (M^{pro}) dimer: Molecular dynamics simulations and multiple X-ray structure analyses. *J. Mol. Biol.* **354**, 25–40 (2005). [doi:10.1016/j.jmb.2005.09.012](https://doi.org/10.1016/j.jmb.2005.09.012) Medline
8. J. Shi, J. Song, The catalysis of the SARS 3C-like protease is under extensive regulation by its extra domain. *FEBS J.* **273**, 1035–1045 (2006). [doi:10.1111/j.1742-4658.2006.05130.x](https://doi.org/10.1111/j.1742-4658.2006.05130.x) Medline
9. K. Anand, G. J. Palm, J. R. Mesters, S. G. Siddell, J. Ziebuhr, R. Hilgenfeld, Structure of coronavirus main proteinase reveals combination of a chymotrypsin fold with an extra α -helical domain. *EMBO J.* **21**, 3213–3224 (2002). [doi:10.1093/emboj/cdf327](https://doi.org/10.1093/emboj/cdf327) Medline
10. L. Lim, J. Shi, Y. Mu, J. Song, Dynamically-driven enhancement of the catalytic machinery of the SARS 3C-like protease by the S284-T285-I286/A mutations on the extra domain. *PLOS ONE* **9**, e101941 (2014). [doi:10.1371/journal.pone.0101941](https://doi.org/10.1371/journal.pone.0101941) Medline
11. N. A. Kratochwil, W. Huber, F. Müller, M. Kansy, P. R. Gerber, Predicting plasma protein binding of drugs: A new approach. *Biochem. Pharmacol.* **64**, 1355–1374 (2002). [doi:10.1016/S0006-2952\(02\)01074-2](https://doi.org/10.1016/S0006-2952(02)01074-2) Medline
12. H. Yang, M. Yang, Y. Ding, Y. Liu, Z. Lou, Z. Zhou, L. Sun, L. Mo, S. Ye, H. Pang, G. F. Gao, K. Anand, M. Bartlam, R. Hilgenfeld, Z. Rao, The crystal structures of severe acute respiratory syndrome virus main protease and its complex with an inhibitor. *Proc. Natl. Acad. Sci. U.S.A.* **100**, 13190–13195 (2003). [doi:10.1073/pnas.1835675100](https://doi.org/10.1073/pnas.1835675100) Medline
13. H. Chen, P. Wei, C. Huang, L. Tan, Y. Liu, L. Lai, Only one protomer is active in the dimer of SARS 3C-like proteinase. *J. Biol. Chem.* **281**, 13894–13898 (2006). [doi:10.1074/jbc.M510745200](https://doi.org/10.1074/jbc.M510745200) Medline
14. L. Zhu, S. George, M. F. Schmidt, S. I. Al-Gharabli, J. Rademann, R. Hilgenfeld, Peptide aldehyde inhibitors challenge the substrate specificity of the SARS-coronavirus main protease. *Antiviral Res.* **92**, 204–212 (2011). [doi:10.1016/j.antiviral.2011.08.001](https://doi.org/10.1016/j.antiviral.2011.08.001) Medline
15. J. Tan, S. George, Y. Kusov, M. Perbandt, S. Anemüller, J. R. Mesters, H. Norder, B. Coutard, C. Lacroix, P. Leyssen, J. Neyts, R. Hilgenfeld, 3C protease of enterovirus 68: Structure-based design of Michael acceptor inhibitors and their broad-spectrum antiviral effects against picornaviruses. *J. Virol.* **87**, 4339–4351 (2013). [doi:10.1128/JVI.01123-12](https://doi.org/10.1128/JVI.01123-12) Medline
16. P. S. Dragovich, R. Zhou, D. J. Skalkitzky, S. A. Fuhrman, A. K. Patick, C. E. Ford, J. W. Meador 3rd, S. T. Worland, Solid-phase synthesis of irreversible human rhinovirus 3C protease inhibitors. Part 1: Optimization of tripeptides incorporating N-terminal amides. *Bioorg. Med. Chem.* **7**, 589–598 (1999). [doi:10.1016/S0968-0896\(99\)00005-X](https://doi.org/10.1016/S0968-0896(99)00005-X) Medline
17. L. Zhang, D. Lin, R. Hilgenfeld, Crystal structure of the complex resulting from the reaction between the SARS-CoV main protease and tert-butyl (1-((S)-3-cyclohexyl-1-(((S)-4-(cyclopropylamino)-3,4-dioxo-1-((S)-2-oxopyrrolidin-3-yl)butan-2-yl) amino)-1-oxopropan-2-yl)-2-oxo-1,2-dihydropyridin-3-yl)carbamate, PDB ID 6Y7M (2020). [doi:10.2210/pdb6Y7M/pdb](https://doi.org/10.2210/pdb6Y7M/pdb)
18. L. Zhu, R. Hilgenfeld, Crystal structure of SARS coronavirus main protease complexed with an α , β -unsaturated ethyl ester inhibitor SG85, PDB ID 3TNT (2012). [doi:10.2210/pdb3TNT/pdb](https://doi.org/10.2210/pdb3TNT/pdb)
19. Y. Kusov, J. Tan, E. Alvarez, L. Enjuanes, R. Hilgenfeld, A G-quadruplex-binding macrodomain within the “SARS-unique domain” is essential for the activity of the SARS-coronavirus replication-transcription complex. *Virology* **484**, 313–322 (2015). [doi:10.1016/j.virol.2015.06.016](https://doi.org/10.1016/j.virol.2015.06.016) Medline
20. X. Xue, H. Yang, W. Shen, Q. Zhao, J. Li, K. Yang, C. Chen, Y. Jin, M. Bartlam, Z. Rao, Production of authentic SARS-CoV M^{pro} with enhanced activity: Application as a novel tag-cleavage endopeptidase for protein overproduction. *J. Mol. Biol.* **366**, 965–975 (2007). [doi:10.1016/j.jmb.2006.11.073](https://doi.org/10.1016/j.jmb.2006.11.073) Medline
21. U. Mueller, N. Darowski, M. R. Fuchs, R. Förster, M. Hellmig, K. S. Paithankar, S. Pühringer, M. Steffien, G. Zocher, M. S. Weiss, Facilities for macromolecular crystallography at the Helmholtz-Zentrum Berlin. *J. Synchrotron Radiat.* **19**, 442–449 (2012). [doi:10.1107/S0909049512006395](https://doi.org/10.1107/S0909049512006395) Medline
22. M. Krug, M. S. Weiss, U. Heinemann, U. Mueller, XDSAPP: A graphical user interface for the convenient processing of diffraction data using XDS. *J. Appl. Crystallogr.* **45**, 568–572 (2012). [doi:10.1107/S0021889812011715](https://doi.org/10.1107/S0021889812011715)
23. P. Evans, Scaling and assessment of data quality. *Acta Crystallogr. D* **62**, 72–82 (2006). [doi:10.1107/S0907444905036693](https://doi.org/10.1107/S0907444905036693) Medline
24. P. R. Evans, An introduction to data reduction: Space-group determination, scaling and intensity statistics. *Acta Crystallogr. D* **67**, 282–292 (2011). [doi:10.1107/S090744491003982X](https://doi.org/10.1107/S090744491003982X) Medline
25. M. D. Winn, C. C. Ballard, K. D. Cowtan, E. J. Dodson, P. Emsley, P. R. Evans, R. M. Keegan, E. B. Krissinel, A. G. Leslie, A. McCoy, S. J. McNicholas, G. N. Murshudov, N. S. Pannu, E. A. Pottorff, H. R. Powell, R. J. Read, A. Vagin, K. S. Wilson, Overview of the CCP4 suite and current developments. *Acta Crystallogr. D* **67**, 235–242 (2011). [doi:10.1107/S0907444910045749](https://doi.org/10.1107/S0907444910045749) Medline
26. A. Vagin, A. Teplyakov, Molecular replacement with MOLREP. *Acta Crystallogr. D* **66**, 22–25 (2010). [doi:10.1107/S0907444909042589](https://doi.org/10.1107/S0907444909042589) Medline
27. A. A. Lebedev, P. Young, M. N. Isupov, O. V. Moroz, A. A. Vagin, G. N. Murshudov, Jligand: A graphical tool for the CCP4 template-restraint library. *Acta Crystallogr. D* **68**, 431–440 (2012). [doi:10.1107/S090744491200251X](https://doi.org/10.1107/S090744491200251X) Medline
28. P. Emsley, B. Lohkamp, W. G. Scott, K. Cowtan, Features and development of Coot. *Acta Crystallogr. D* **66**, 486–501 (2010). [doi:10.1107/S0907444910007493](https://doi.org/10.1107/S0907444910007493) Medline
29. G. N. Murshudov, P. Skubák, A. A. Lebedev, N. S. Pannu, R. A. Steiner, R. A. Nicholls, M. D. Winn, F. Long, A. A. Vagin, REFMAC5 for the refinement of macromolecular crystal structures. *Acta Crystallogr. D* **67**, 355–367 (2011). [doi:10.1107/S0907444911001314](https://doi.org/10.1107/S0907444911001314) Medline
30. Y. Liu, W. Kati, C. M. Chen, R. Tripathi, A. Molla, W. Kohlbrenner, Use of a fluorescence plate reader for measuring kinetic parameters with inner filter effect correction. *Anal. Biochem.* **267**, 331–335 (1999). [doi:10.1006/abio.1998.3014](https://doi.org/10.1006/abio.1998.3014) Medline
31. P. H. Brown, A. Balbo, P. Schuck, Characterizing protein-protein interactions by

- sedimentation velocity analytical ultracentrifugation. *Curr. Protoc. Immunol.* Chapter 18, Unit 18.15 (2008).
32. P. Schuck, Size-distribution analysis of macromolecules by sedimentation velocity ultracentrifugation and lamm equation modeling. *Biophys. J.* **78**, 1606–1619 (2000). [doi:10.1016/S0006-3495\(00\)76713-0](https://doi.org/10.1016/S0006-3495(00)76713-0) [Medline](#)
 33. M. T. Laue, B. D. Shah, T. M. Rigdeway, S. L. Pelletier, in *Analytical Ultracentrifugation in Biochemistry and Polymer Science*, S. Harding, A. Rowe, J. Horton, Eds. (Royal Society of Chemistry, 1992), pp. 90–125.
 34. E. F. Pettersen, T. D. Goddard, C. C. Huang, G. S. Couch, D. M. Greenblatt, E. C. Meng, T. E. Ferrin, UCSF Chimera—A visualization system for exploratory research and analysis. *J. Comput. Chem.* **25**, 1605–1612 (2004). [doi:10.1002/jcc.20084](https://doi.org/10.1002/jcc.20084) [Medline](#)
 35. Q. Tian, N. K. Nayyar, S. Babu, L. Chen, J. Tao, S. Lee, A. Tibbetts, T. Moran, J. Liou, M. Guo, T. P. Kennedy, An efficient synthesis of a key intermediate for the preparation of the rhinovirus protease inhibitor AG7088 via asymmetric dianionic cyanomethylation of N-Boc-L-(+)-glutamic acid dimethyl ester. *Tetrahedron Lett.* **42**, 6807–6809 (2001). [doi:10.1016/S0040-4039\(01\)01416-2](https://doi.org/10.1016/S0040-4039(01)01416-2)
 36. V. M. Cormann, O. Landt, M. Kaiser, R. Molenkamp, A. Meijer, D. K. W. Chu, T. Bleicker, S. Brünink, J. Schneider, M. L. Schmidt, D. G. J. C. Mulders, B. L. Haagmans, B. van der Veer, S. van den Brink, L. Wijsman, G. Goderski, J. L. Romette, J. Ellis, M. Zambon, M. Peiris, H. Goossens, C. Reusken, M. P. G. Koopmans, C. Drosten, Detection of 2019 novel coronavirus (2019-nCoV) by real-time RT-PCR. *Euro Surveill.* **25**, (2020). [doi:10.2807/1560-7917.ES.2020.25.3.2000045](https://doi.org/10.2807/1560-7917.ES.2020.25.3.2000045) [Medline](#)
 37. Y. Zhang, M. Huo, J. Zhou, S. Xie, PKSolver: An add-in program for pharmacokinetic and pharmacodynamic data analysis in Microsoft Excel. *Comput. Methods Programs Biomed.* **99**, 306–314 (2010). [doi:10.1016/j.cmpb.2010.01.007](https://doi.org/10.1016/j.cmpb.2010.01.007) [Medline](#)
 38. W. C. Hsu, H. C. Chang, C. Y. Chou, P. J. Tsai, P. I. Lin, G. G. Chang, Critical assessment of important regions in the subunit association and catalytic action of the severe acute respiratory syndrome coronavirus main protease. *J. Biol. Chem.* **280**, 22741–22748 (2005). [doi:10.1074/jbc.M502556200](https://doi.org/10.1074/jbc.M502556200) [Medline](#)
 39. C. A. Bräutigam, Calculations and publication-quality illustrations for analytical ultracentrifugation data. *Methods Enzymol.* **562**, 109–133 (2015). [doi:10.1016/bs.mie.2015.05.001](https://doi.org/10.1016/bs.mie.2015.05.001) [Medline](#)
 40. M. S. Weiss, R. Hilgenfeld, On the use of the merging *R* factor as a quality indicator for X-ray data. *J. Appl. Crystallogr.* **30**, 203–205 (1997). [doi:10.1107/S0021889897003907](https://doi.org/10.1107/S0021889897003907)
 41. P. A. Karplus, K. Diederichs, Linking crystallographic model and data quality. *Science* **336**, 1030–1033 (2012). [doi:10.1126/science.1218231](https://doi.org/10.1126/science.1218231) [Medline](#)
 42. V. B. Chen, W. B. Arendall 3rd, J. J. Headd, D. A. Keedy, R. M. Immormino, G. J. Kapral, L. W. Murray, J. S. Richardson, D. C. Richardson, *MolProbity*: All-atom structure validation for macromolecular crystallography. *Acta Crystallogr. D* **66**, 12–21 (2010). [doi:10.1107/S0907444909042073](https://doi.org/10.1107/S0907444909042073) [Medline](#)

ACKNOWLEDGMENTS

The authors are grateful to Yuri Kusov and Guido Hansen as well as Aws Aljnabi for determining the inhibitory activities of compounds in a SARS-CoV replicon and against recombinant MERS-CoV M^{pro}, respectively, and to Thorsten Biet for recording ¹³C NMR spectra. We thank Andrea Ahlers, Janine Schreiber, and Lidia Litz for excellent technical assistance, Kuilan Chen for continuous organizational support, and the staff at beamline 14.2 of BESSY II, Berlin, Germany, for help with diffraction data collection. **Funding:** We thank the German Center for Infection Research (DZIF) for financial support (projects TTU01, grant # 8011801806, and TTU09, grant # 8004709710). **Author contributions:** Conceptualization: LLZ, DZL, RH; Investigation: LLZ, DZL, XYYS, UC, LS, SB, KR, RH; Contribution of research materials: CD; Writing - original draft preparation: RH, DZL, KR; Writing - review and editing: LLZ, DZL, UC, LS, KR, RH; Visualization: LLZ, LS; Supervision: RH; Funding acquisition: RH, SB, KR; **Competing interests:** The University of Lübeck has filed a patent application covering compounds **13a** and **13b** as well as related compounds with a pyridone structure in the P3 - P2 position, with LLZ, DZL, and RH as inventors.

Data and materials availability: Crystallographic coordinates and structure factors are available from the PDB under accession codes 6Y2E (unliganded M^{pro}), 6Y2F (complex with **13b** in space group C2), and 6Y2G (complex with **13b** in space group P2₁2₁2₁). The plasmid encoding the SARS-CoV-2 M^{pro} will be freely available. The available amounts of inhibitors are limited.

SUPPLEMENTARY MATERIALS

science.sciencemag.org/cgi/content/full/science.abb3405/DC1

Materials and Methods

Supplementary Text

Scheme S1

Figs. S1 to S10

Tables S1 to S3

References (20–42)

17 February 2020; accepted 18 March 2020

Published online 20 March 2020

10.1126/science.abb3405

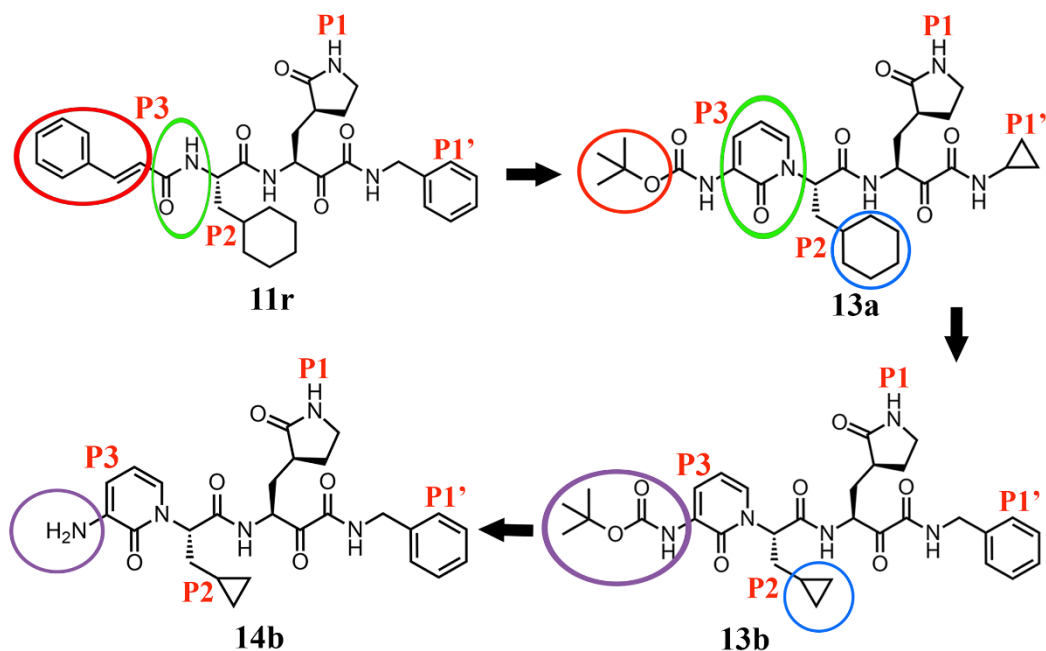


Fig. 1. Chemical structures of α -ketoamide inhibitors 11r, 13a, 13b, and 14b. Colored circles highlight the modifications from one development step to the next (see text).

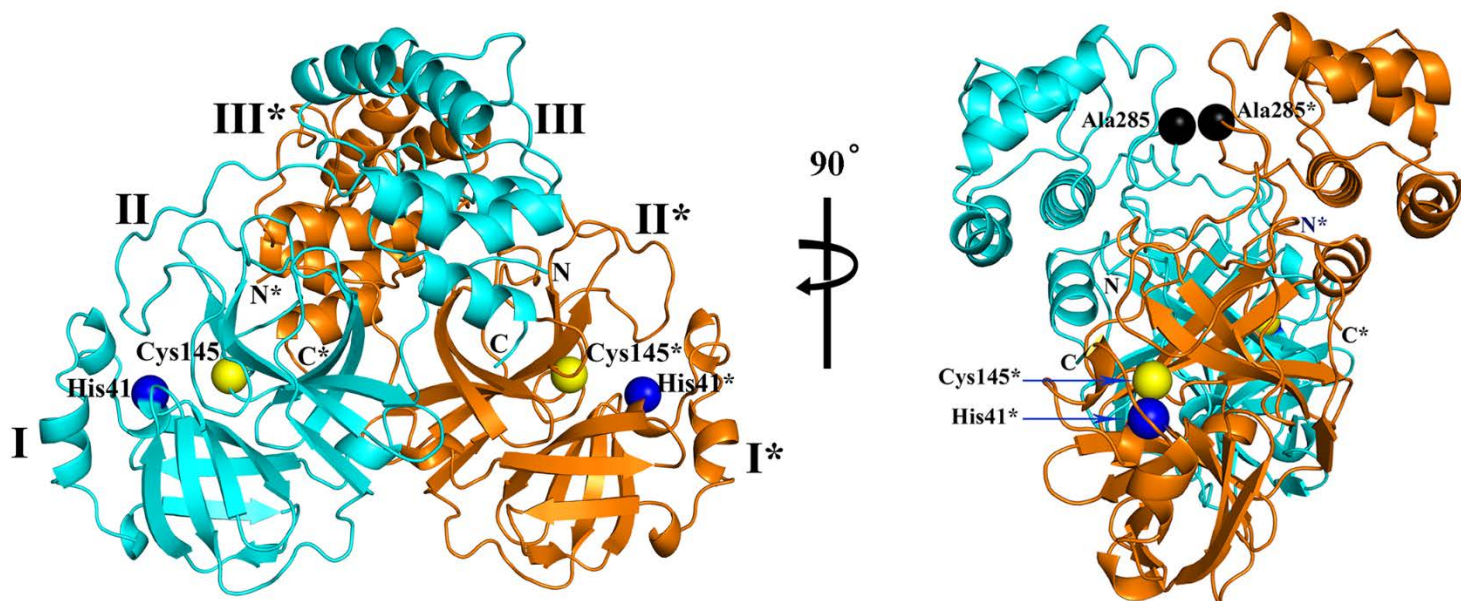


Fig. 2. Three-dimensional structure of SARS-CoV-2 M^{pro}, in two different views. One protomer of the dimer is shown in light blue, the other one in orange. Domains are labeled by Roman numbers. Amino-acid residues of the catalytic site are indicated as yellow and blue spheres, for Cys¹⁴⁵ and His⁴¹, respectively. (An asterisk marks a residue from protomer B (orange)). Black spheres indicate the positions of Ala²⁸⁵ of each of the two domains III (see text). Chain termini are labeled N and C for molecule A (light blue) and N* and C* for molecule B (orange).

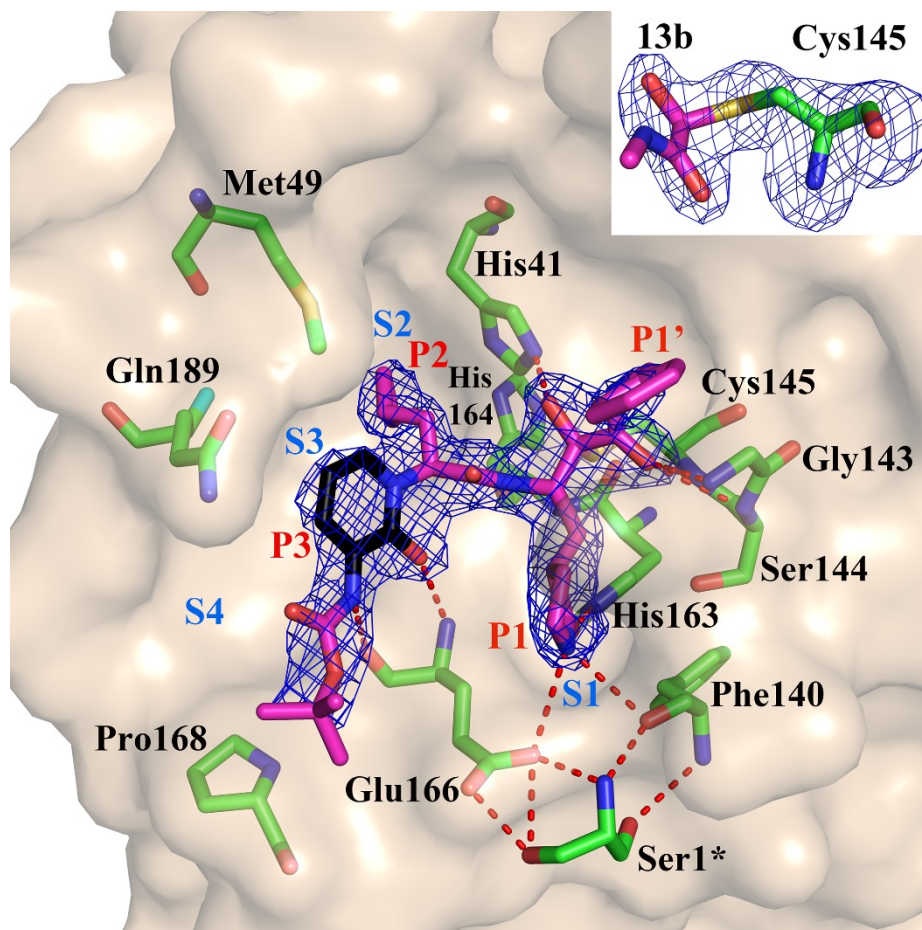


Fig. 3. Compound 13b in the substrate-binding cleft located between domains I and II of the M^{pro} , in the monoclinic crystal form (space group $C2$). $F_o - F_c$ density is shown for the inhibitor (contouring level: 3σ). Carbon atoms of the inhibitor are magenta, except in the pyridone ring, which is black; oxygen atoms are red, nitrogens blue, and sulfur yellow. Light-blue symbols S1, S2, S3, S4 indicate the canonical binding pockets for moieties P1, P2, P3, P4 (red symbols) of the peptidomimetic inhibitor. Hydrogen bonds are indicated by dashed red lines. Note the interaction between the N-terminal residue of chain B, Ser1*, and Glu166 of chain A, which is essential for keeping the S1 pocket in the right shape and the enzyme in the active conformation. Inset: Thiohemiketal formed by the nucleophilic attack of the catalytic cysteine onto the α -carbon of the inhibitor in its $F_o - F_c$ density (contoured at 3σ). The stereochemistry of the α -carbon is S. See fig. S8 for more details.

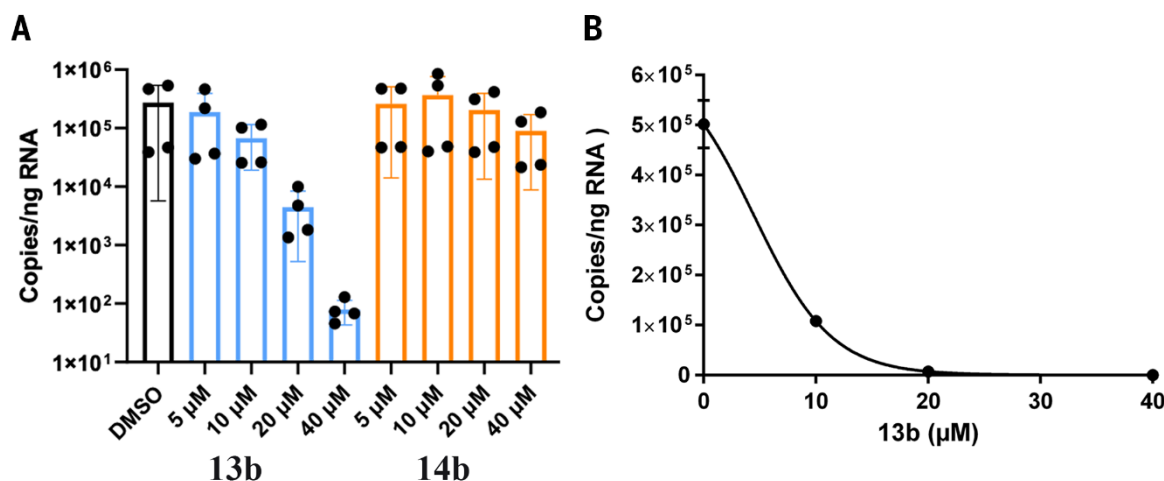


Fig. 4. Compound 13b inhibits SARS-CoV-2 replication in human Calu3 lung cells. (A) Calu-3 cells were infected with SARS-CoV-2 using an MOI of 0.05 and stimulated with DMSO (black bar) or different amounts (5, 10, 20, or 40 μM) of **13b** (blue bars) or **14b** (orange bars) and analyzed at 24 hours p.i.. In (A), total RNA was isolated from cell lysates and viral RNA content was analyzed by qPCR. (B) For the estimation of the EC₅₀ value of compound **13b** against SARS-CoV-2, a dose-response curve was prepared (GraphPad). (A) represents means ± SD of two biological experiments with two technical replicates each.

Crystal structure of SARS-CoV-2 main protease provides a basis for design of improved α -ketoamide inhibitors

Linlin Zhang, Daizong Lin, Xinyuanyuan Sun, Ute Curth, Christian Drosten, Lucie Sauerhering, Stephan Becker, Katharina Rox and Rolf Hilgenfeld

published online March 20, 2020

ARTICLE TOOLS

<http://science.sciencemag.org/content/early/2020/03/19/science.abb3405>

SUPPLEMENTARY MATERIALS

<http://science.sciencemag.org/content/suppl/2020/03/19/science.abb3405.DC1>

REFERENCES

This article cites 39 articles, 7 of which you can access for free
<http://science.sciencemag.org/content/early/2020/03/19/science.abb3405#BIBL>

PERMISSIONS

<http://www.sciencemag.org/help/reprints-and-permissions>

Use of this article is subject to the [Terms of Service](#)

Science (print ISSN 0036-8075; online ISSN 1095-9203) is published by the American Association for the Advancement of Science, 1200 New York Avenue NW, Washington, DC 20005. The title *Science* is a registered trademark of AAAS.

Copyright © 2020, American Association for the Advancement of Science