



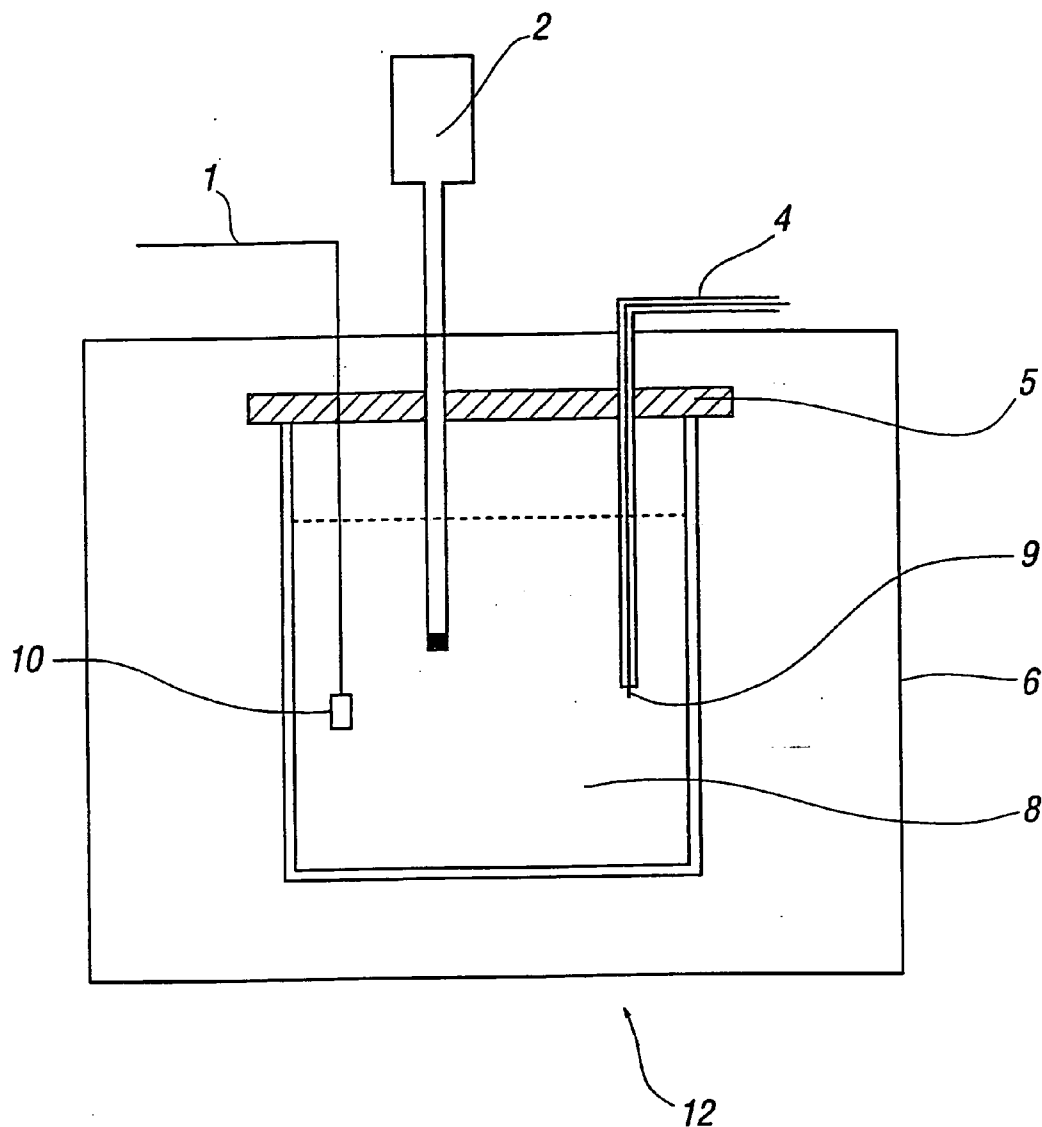
US 20050236376A1

(19) **United States**(12) **Patent Application Publication**
Eccles(10) **Pub. No.: US 2005/0236376 A1**(43) **Pub. Date: Oct. 27, 2005**(54) **ENERGY GENERATION****Publication Classification**(76) **Inventor: Christopher Robert Eccles, Colchester**
(GB)(51) **Int. Cl.⁷** A61N 1/18; B23K 9/00(52) **U.S. Cl.** 219/121.36; 373/22

Correspondence Address:

MCANDREWS HELD & MALLOY, LTD
500 WEST MADISON STREET
SUITE 3400
CHICAGO, IL 60661(57) **ABSTRACT**(21) **Appl. No.: 11/061,048**(22) **Filed: Feb. 18, 2005****Related U.S. Application Data**(63) Continuation of application No. 09/830,040, filed on
Aug. 13, 2001.

Methods and apparatus are described for releasing energy from hydrogen and/or deuterium atoms. An electrolyte is provided which has a catalyst therein suitable for initiating transitions of hydrogen and/or deuterium atoms in the electrolyte to a subground energy state. A plasma discharge is generated in the electrolyte to release energy by fusing the atoms together.



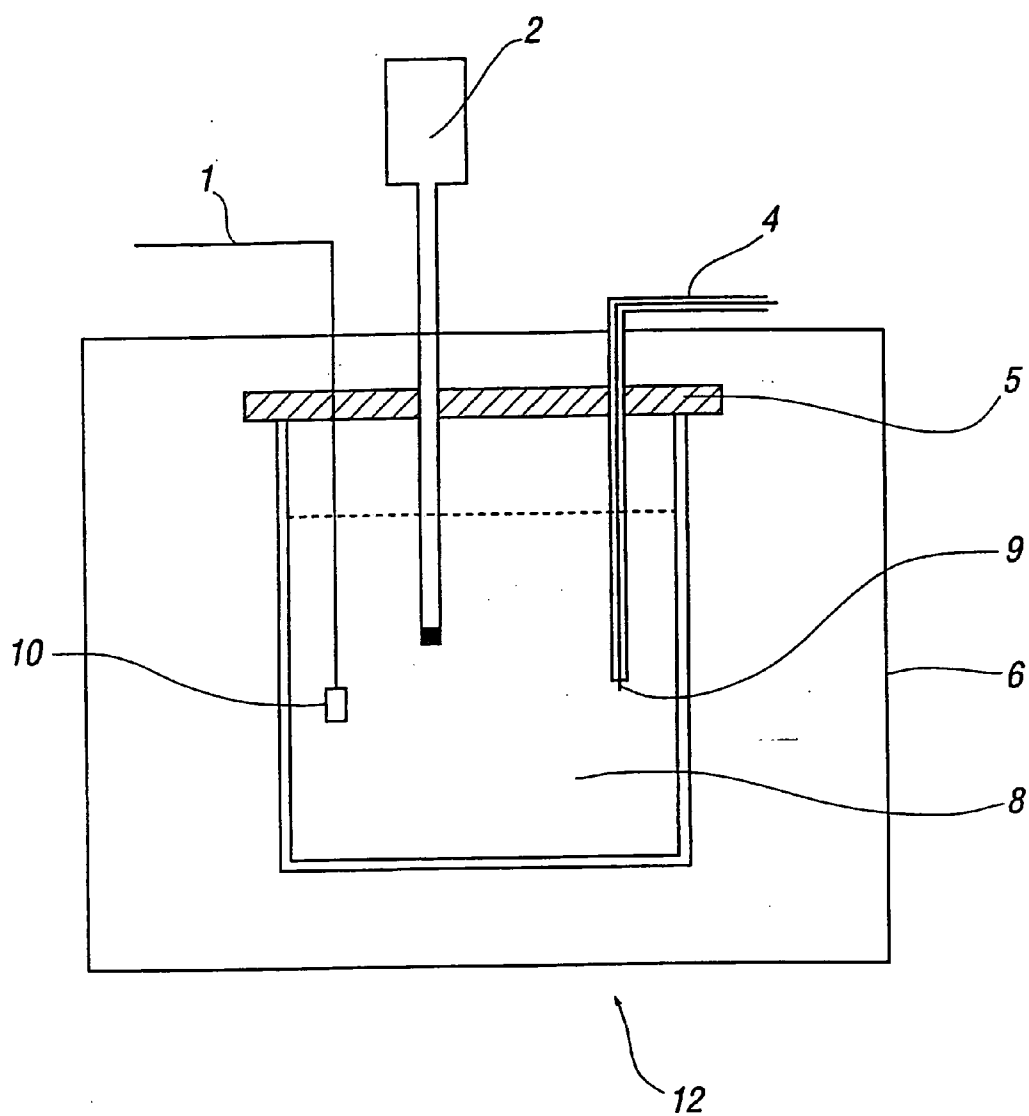


FIG. 1

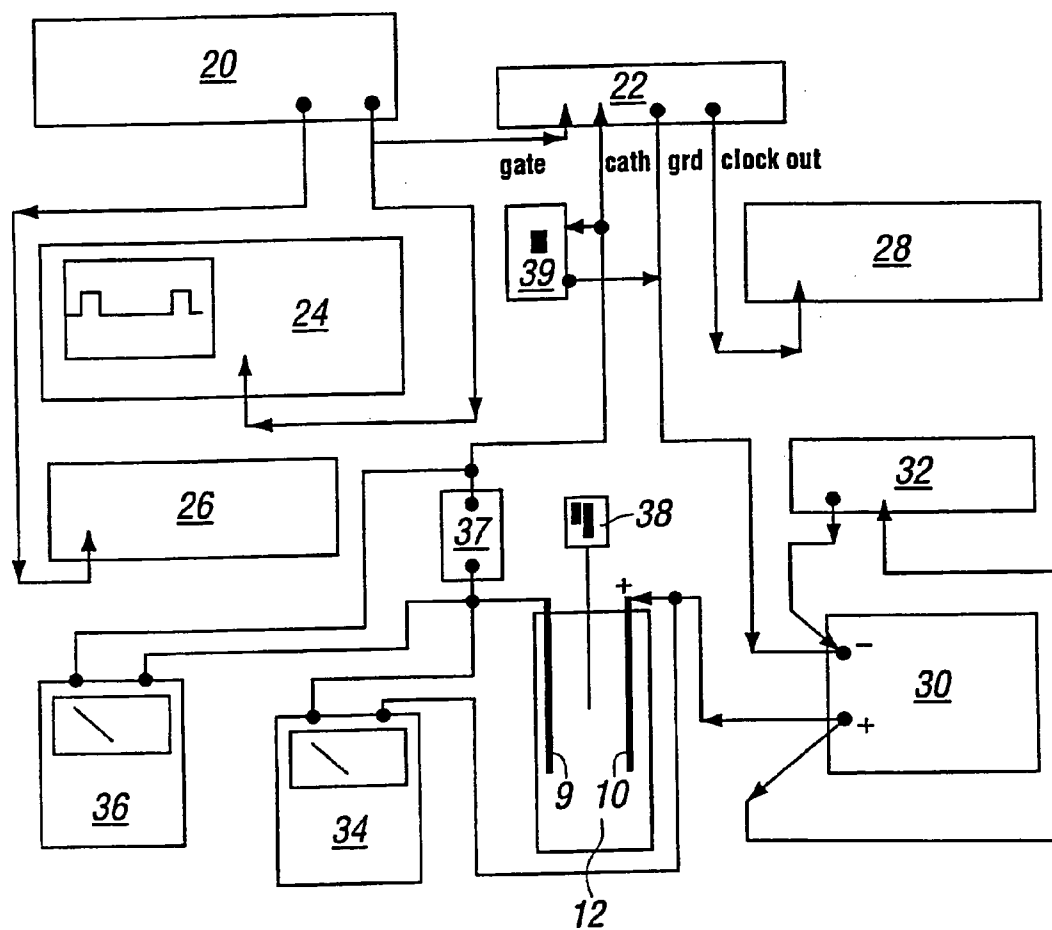


FIG. 2

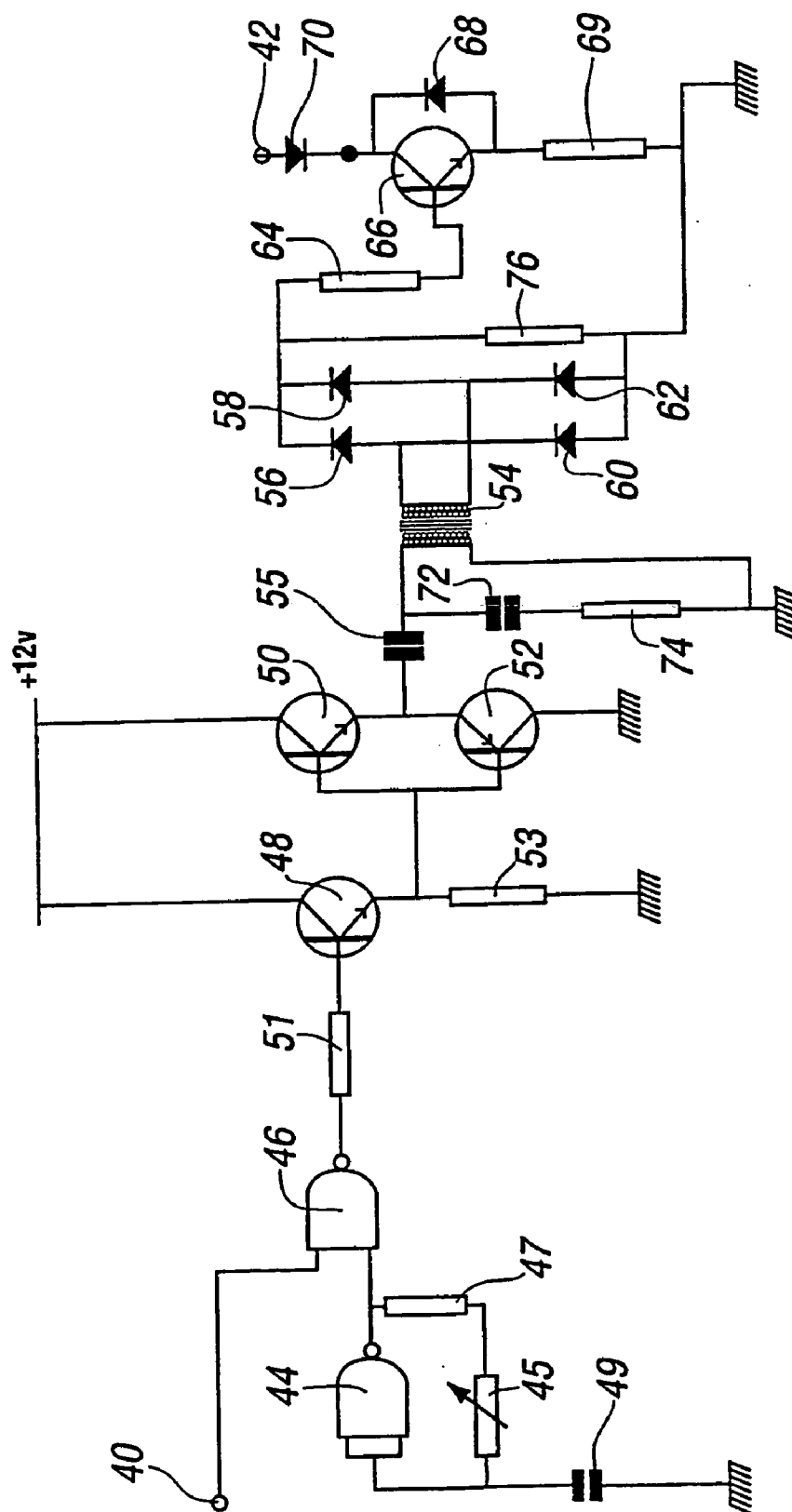


FIG. 3

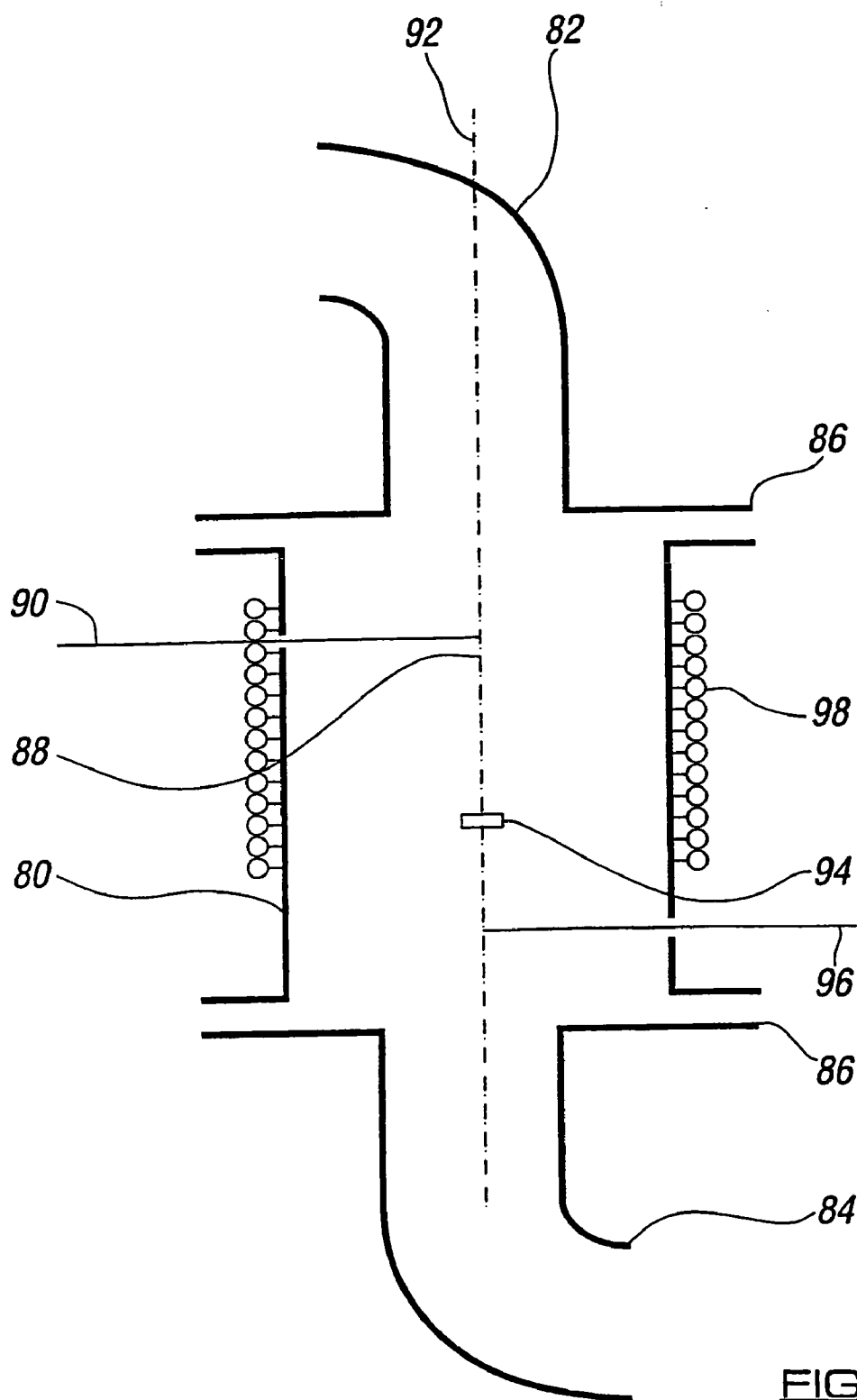


FIG. 4

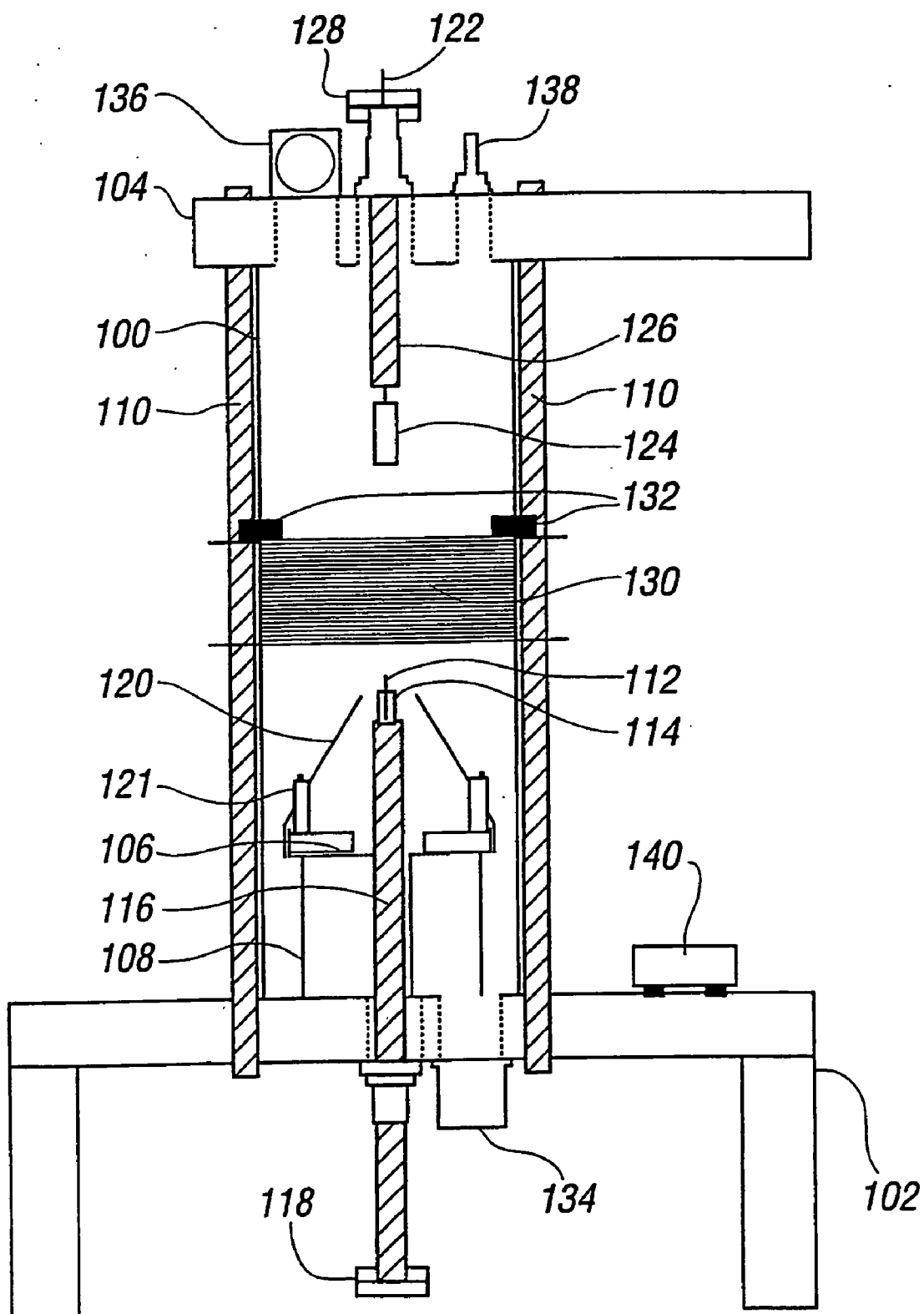


FIG. 5

ENERGY GENERATION

[0001] The present invention relates to the generation of energy, and more particularly to the release of energy as a result of both a state-transition in hydrogen and fusion of light atomic nuclei.

[0002] Normally, fusion processes are able to be initiated only at extremely high temperatures, as found in the vicinity of a nuclear fusion (uranium or plutonium) detonation. This is the principle of most thermonuclear bombs. Such a release of energy is impractical as a means of providing the power to generate electricity and heat for distribution, as it occurs too rapidly with too high a magnitude for it to be manageable.

[0003] In recent years, many attempts have been made to initiate controlled fusion processes at high temperatures by the enclosure of a region of plasma-discharge within a confined space, such as a toroidal chamber, using electromagnetic restraint. Such attempts have met with little commercial success to date as systems which employ such a technique have so far consumed more energy than they have produced and are not continuous processes.

[0004] Another approach which has been attempted in order to achieve fusion of light nuclei has been the so-called "cold fusion" technique, in which deuterium atoms have been induced to tunnel into the crystal lattice of a metal such as palladium during electrolysis. It is claimed that the atoms are forced together in the lattice, overcoming the repulsive electrostatic force. However, no clear and unambiguous demonstration of successful cold fusion has yet been presented publicly.

[0005] The present invention provides a method of releasing energy comprising the steps of providing an electrolyte having a catalyst therein, the catalyst being suitable for initiating transitions of hydrogen and/or deuterium atoms in the electrolyte to a sub-ground energy state, and generating a plasma discharge in the electrolyte. The applicants have determined that this method generates substantially more energy than the power input used to generate the plasma, whilst doing so in a controllable manner.

[0006] Preferably, the plasma discharge is generated by applying a voltage across electrodes in the electrolyte and an intermittent voltage has proved particularly beneficial in increasing the level of energy generation. It also provides a means of controlling the process to maintain a consistent level of energy production over a significant period of time.

[0007] The application of a voltage higher than that necessary to generate plasma is also beneficial to the process and will be typically in the range 50V to 20000V and preferably between 300 and 2000V, but may be higher than 20000V, whereas in conventional electrolysis techniques low voltages of about 3 volts are used and applied continuously across the electrodes.

[0008] The applied voltage may be DC or provided at a switching frequency of up to 100 kHz. The duty cycle of the applied voltage is preferably in the range 0.5 to 0.001, but may be even lower than 0.001. During the pulse period a monomolecular layer of metal hydride may be formed at the cathode-Helmholtz layer interface and subsequently decays to form gas in the nascent state comprising monatomic hydrogen and/or deuterium. The waveform of the applied

voltage may be substantially square shaped. Whilst application of DC to the electrode does produce the metal hydride and monatomic hydrogen and/or deuterium, the use of a pulsed voltage has been found to be more efficient as most dissociation of the hydride then occurs between the pulses.

[0009] In applications where the electrolyte is flowed past the electrodes it may be preferable to use two separate cathodes, the first of which will be engineered to optimise production of hydrogen/deuterium atoms and the second of which will provide the plasma discharge. In this instance the direction of flow of the electrolyte is from first to second cathode. The design of the apparatus seeks to direct the flow of electrolyte to maximise contact of monatomic hydrogen or deuterium atoms with the plasma. The characteristics and magnitudes of the voltages applied to each cathode are preferably similar, but may have different duty periods.

[0010] In a preferred embodiment, the cathode design and applied voltage are such as to provide a current density of 400,000 amps per square meter or even greater. More preferably, the current density at the cathode is 500,000 amps per square meter or above.

[0011] In carrying out a preferred method in accordance with the invention, it has been found that the process may be assisted by initial heating of the electrolyte, which may be water or a salt solution, prior to applying electrical input to the vessel. A temperature in the range 40 to 100° C., or more preferably 40 to 80° C., has been found to be particularly beneficial.

[0012] The ratio of water to deuterium oxide (D₂O) in the electrolyte may be varied to control the energy generation. In some circumstances it may be preferable to use "light" water H₂O alone and in others to use D₂O alone. Additionally, the amount of catalyst added to the electrolyte may be varied as a controlling factor and preferably lies in the range 1 to 20 mMol.

[0013] In preferred embodiments, the method includes the step of generating a magnetic field in the region of the electrodes. The intensity and/or frequency of the current used to generate the field may be adjusted to move the plasma discharge away from the electrode from which it is struck in order to minimise erosion and extend the operating life of the system. Only slight separation may be required to achieve this effect.

[0014] In further preferred embodiments, the heat generated by the process may be removed and utilised by way of a number of known and proven technologies including the circulation of the electrolyte through a heat exchanger, or using heat pipes to produce heating, or alternatively to produce electricity using a pressurised steam cycle or a low-boiling-point fluid turbine cycle, or by other means.

[0015] The present invention further provides apparatus for carrying out methods disclosed herein comprising an anode, first and second cathodes, a reaction vessel having an inlet and an outlet, means for feeding an electrolyte through the vessel from its inlet to its outlet, the electrolyte having a catalyst therein suitable for initiating transitions of hydrogen and/or deuterium atoms in the electrolyte to a sub-ground energy state, means for applying a voltage across the anode and the first cathode to form hydrogen and/or deuterium atoms, and means for applying a voltage across the

anode and second cathode to generate a plasma discharge in the electrolyte, the second cathode being downstream from the first cathode.

[0016] During the methods described herein, atoms of hydrogen and/or deuterium are believed to undergo a fundamental change in their structure by exchange of photons with salts in solution. The applicants believe that this change, and the observed phenomena, can be explained as set out below.

[0017] It is well known that a system comprising a spherical shell of charge (the electron path) located around an atomic nucleus constitutes a resonant cavity. Resonant systems act as the repository of photon energy of discrete frequencies. The absorption of energy by a resonant system excites the system to a higher-energy state. For any spherical resonant cavity, the relationship between a permitted radius and the wavelength of the absorbed photon is:

$$2\pi r = n\lambda$$

[0018] where n is an integer

[0019] and λ is the wavelength

[0020] For non-radiating or stable states, the relationship between the electron wavelength and the allowed radii is:

$$2\pi[nr_1] = 2\pi r_{(n)} = n\lambda_{(n)} = \lambda_{(n)} \quad (2)$$

[0021] where

[0022] $n=1$

[0023] or

[0024] $n=2, 3, 4 \dots$

[0025] or $p1 \ n=1/2, 1/3, 1/4$

[0026] and

[0027] $\lambda_{(1)}$ =the allowed wavelength for $n=1$

[0028] $r_{(1)}$ =the allowed radius for $n=1$

[0029] In a hydrogen atom (and the following applies equally to a deuterium atom), the ground state electron-path radius can be defined as $r_{(O)}$. This is sometimes referred to as the Bohr radius, a_O . There is normally no spontaneous photon emission from a ground state atom and thus there must be a balance between the centripetal and the electric forces present. Thus:

$$[m_{(e)} \cdot v_1^2] / r_{(O)} = Ze^2 / (4\pi \cdot \epsilon_{(O)} \cdot r_{(O)}^2) \quad (3)$$

[0030] where

[0031] $m_{(e)}$ =electron rest mass

[0032] v_1 =ground state electron velocity

[0033] e =elementary charge

[0034] $\epsilon_{(O)}$ =electric constant (sometimes referred to as the permittivity of free space)

[0035] Z =atomic number (for hydrogen, 1)

[0036] Looking first at the excited (higher energy) states, where the hydrogen atom has absorbed photon(s) of discrete wavelength/frequency (and hence energy), the system is again stable and normally non-radiating, and to maintain force balance, the effective nuclear charge becomes $Z_{\text{eff}} = Z/n$, and the balance equation becomes:

$$[m_{(e)} \cdot v_n^2] / nr_{(O)} = [e^2/n] / (4\pi \cdot \epsilon_{(O)} [nr_{(O)}]^2) \quad (4)$$

[0037] where

[0038] n =integer value of excited state (1, 2, 3 . . .)

[0039] v_n =electron velocity in the n th excited state

[0040] The absorption of radiation by an atom thus results in an excited state which may decay to ground state, or to a lower excited state, spontaneously, or be triggered to do so, resulting in the re-release of a quantum of energy in the form of a photon. In any system consisting of a large number of atoms, transitions between states are occurring continuously and randomly and this activity gives rise to the observable spectra of emitted radiation from hydrogen.

[0041] Each value of n corresponds to a transition which is permitted to occur when a resonant photon is absorbed by the atom. Integer values of n represent the absorption of energy by the atom.

[0042] Fractional values for n are allowed by the relationship between the standing wavelength of the electron and the radius of the electron-path, given by (2), above. To maintain force balance, transitions involving fractional values for n must effectively increase the nuclear charge Z to a figure Z_{eff} , and reduce the radius of the electron-path accordingly. This is equivalent to the atom emitting a photon of energy while in the accepted ground state, effecting a transition to a sub-ground state. Because the accepted ground state is a very stable one, such transitions are rarely encountered but the applicants have discovered that they can be induced if the atom is in close proximity to another system which acts as a "receptor-site" for the exact energy quantum required to effect the transition.

[0043] The emission of energy by a hydrogen atom in this way is not limited to a single transition "down" from ground state, but can occur repetitively and, possibly, transitions to $1/3, 1/4, 1/5$ etc states may occur as a single event if the energy balance of the atom and the catalytic system is favourable. Of course, the usual uncertainty principles forbid the determination of the behaviour of any individual atom, but statistical rules govern the properties of any macroscopic ($>10^9$ quanta) system.

[0044] When a "ground-state" hydrogen atom emits a photon of around 27 eV, the transition occurs to the $a_O/2$ state as demonstrated above and the effective nuclear charge increases to $+2e$. A new equilibrium for the force balance is now established. The electron path radius is reduced. The potential energy of the atom in its reduced radius-state is given by

$$V = -\{Z_{\text{eff}} e^2 / [4\pi \epsilon_{(O)} / 2]\} = -\{4 \times 27.178\} = -108.7 \text{ eV}$$

[0045] The kinetic energy, T , of the reduced electron path is given by

$$T = -[V/2] = 54.35 \text{ eV}$$

[0046] Similarly, it can be seen that the kinetic energy of the ground state electron path is about 13.6 eV. Thus there is a net change in energy of about 41 eV for the transition:

$$H\{Z_{\text{eff}}=1; r=a_{(O)}\} \text{ to } H\{Z_{\text{eff}}=2; r=a_{(O)}/2\}$$

[0047] That is to say, of this 41 eV, about 27 eV is emitted as the catalytic transfer of energy occurs, and the remaining 14 eV is emitted on reestablishment to the force balance.

[0048] The radial "ground-state" field can be considered as a superposition of Fourier components. If integral Fourier

components of energy equal to $m \times 27.2$ eV are removed, the positive electric field inside the electron path radius increases by

$$(m) \times 1.602 \times 10^{-19} \text{C}$$

[0049] The resultant electric field is a time-harmonic solution of the Laplace equations in spherical co-ordinates. In the case of the reduced radius hydrogen atom, the radius at which force balance and the non-radiative condition are achieved is given by

$$r_{(m)} = a_{(0)} [m+1]$$

[0050] where m is an integer.

[0051] From the energy change equations given above, it will be appreciated that, in decaying to this radius from the so-called "ground-state", the atom emits a total energy equal to

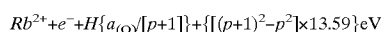
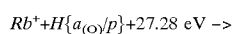
$$[(m+1)^2 - 1^2] \times 13.59 \text{ eV} \quad (5)$$

[0052] The applicants have found that such energy emissions as take place according to (5), above, only appear to occur when the hydrogen or deuterium is found in the monatomic (or so-called "nascent") state. Molecular hydrogen might be made to behave similarly, but the transition is more difficult to achieve owing to the higher energies involved.

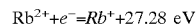
[0053] In order to achieve the transition in monatomic hydrogen (H) or deuterium (D), it is necessary to accumulate the molecular form in the gas phase on a substrate such as nickel or tungsten which favours the dissociation of the molecule. As well as being dissociated into the monatomic form, the hydrogen or deuterium should be bound to the catalytic system to initiate the reaction. The preferred method of achieving this is by electrolysis using cathode material which favours dissociation.

[0054] The applicants have discovered that the catalytic systems which encourage transitions to sub-ground-state energies are those which offer a near-perfect energy couple to the $[m \times 27.2]$ eV needed to "flip" the atom of H or D. It appears from experiment that the effective sink of energy provided by the catalyst need not be precisely equal to that emitted by the atom. Successful transitions have been achieved when there is an error of as much as $\pm 2\%$ between the energy emitted by the atom and that absorbed by the catalytic system. One possible explanation for this is that, in a macroscopic sized system, although the transitions are initiated by a close match in energy level, such discrepancies as arise are manifested as an overall loss or gain in the kinetic energies of the recipient ionic systems. It is thought that spectroscopic analysis of active H or D catalytic systems may provide evidence of this.

[0055] One catalyst that has been found to initiate the transition to the a_0/n state is rubidium in the Rb^+ ionic species. If a salt of rubidium, such as the carbonate Rb_2CO_3 is dissolved in either water or deuterium oxide (heavy water), a substantial dissociation into Rb^+ and $(CO_3)^{2-}$ ions takes place. If the Rb^+ ions are bound closely to monatomic H or D, the transition to the a_0/n state is encouraged by the removal of a further electron from the rubidium ion, by provision of its second ionisation energy of about 27.28 eV. Thus:



[0056] where p represents an integral number of such transitions for any given H and D atom and by spontaneous re-association:



[0057] Thus, the rubidium catalyst remains unchanged in the reaction and there is a net yield of energy per transition.

[0058] Other catalytic systems can be used which have ionisation energies approximating to $[m \times 27.2]$ eV, such as titanium in the form of Ti^{2+} ions and potassium in the form of K^+ ions.

[0059] The applicants believe that the above explanation is consistent with currently accepted quantum theory as discussed below.

[0060] Commencing with the equations of Rydberg and Schrödinger it can be shown that fractional numbers for the quantum energy states in hydrogen yield possible transitions which result in emissions at frequencies which are in accord with observed UV and X-ray spectra. It is therefore possible that the conditions conducive to initiating such transitions may be artificially reproduced in the laboratory under certain circumstances.

[0061] The Rydberg formula for the frequency of emitted radiation from a transition in monatomic hydrogen is:

$$\nu = R_{(0)} c (1/n_{(2)}^2 - 1/n_{(1)}^2)$$

[0062] where:

[0063] ν is the frequency of the emitted photon

[0064] $R_{(0)}$ is Rydberg constant, $1.097373 \times 10^7 \text{ m}^{-1}$

[0065] c is the speed of light in vacuo, $2.997 \times 10^8 \text{ ms}^{-1}$

[0066] and

[0067] $n_{(1)}, n_{(2)}$ are the transition states

[0068] It can be seen from the above that, if the resultant energy state of the hydrogen atom is that which requires $n_{(2)}$ to be equal to $1/2$, emissions will occur which are of higher frequency than the observed Lyman 2-1 transition in the ultra-violet at $2.467 \times 10^{15} \text{ Hz}$ (about 121 nm). There is, indeed, an observed emission at a wavelength of about 30.8 nm, which appears to be confirmed by recent studies of galactic cluster emissions by Böhringer et al (Scientific American, January 1999) and it is difficult for the inventor to conceive of any other quantum-mechanical event which would give rise to such an emission, other than a transition, in accord with the above theory, from 1 to $1/2$ in nascent hydrogen.

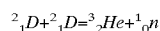
[0069] As can be seen from the above use of the standard Rydberg equation, such behaviour of hydrogen in the monatomic state views the conventional hydrogen "ground-state" as one of many stable electronically-preferred states for single H atoms.

[0070] To summarise, a proliferation of H or D atoms is produced which may have had significantly diminished electron-path-radii by virtue of exchange of photons with their environment. These atoms appear to be relatively unreactive chemically and appear not to readily take the molecular form H-H or D-D. This is a fortunate property which has significance and enables fusion pathways, as described below.

[0071] The fusion of light nuclei, hydrogen and deuterium, to form heavier elements such as helium is one which has traditionally been encouraged by subjecting the reactants to extremes of temperature and pressure. This has been necessary because there is a large electric charge barrier to overcome in order to bring nuclei close enough for fusion to occur.

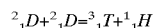
[0072] Using atoms with diminished electron path radius, adjacent nuclei may experience a corresponding reduction in electric barrier and internuclear separations may become smaller. With reductions in internuclear separation, fusion processes become more probable, and more easily occasioned.

[0073] There are two principle fusion pathways for deuterium atoms. The first is:



[0074] where two deuterium nuclei fuse to produce an isotope of helium and a free neutron, which subsequently decays (half-life 6.48×10^2 S), with emission of a β^- particle of medium energy (about 0.8 MeV), and a type of neutrino, to become a stable proton.

[0075] The second is:



[0076] where the two deuterium nuclei fuse to produce the isotope of hydrogen known as tritium (T) and a free stable proton. The tritium eventually decays (half-life 12.3 years), with emission of a β^- particle of very low energy (about 0.018 MeV), to become 3_2He .

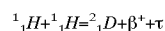
[0077] Of the two, the second fusion path is preferred for the peaceful exploitation of its energy yield, because the fusion products are (relatively) harmless on production, and decay to completely innocuous species within a short time, emitting radiation which can be effectively shielded by a thin sheet of kitchen foil or by 10 mm of acrylic plastic, for example.

[0078] When deuterium nuclei are forced together under high temperature and pressure conditions (as in a thermonuclear bomb), there is a greater than 50% probability for the first pathway to be the dominant one. This is because the high temperature process takes no account of nuclear alignment at the point of fusion. It is actually a matter of forcing nuclei together indiscriminately and hoping that enough fuse to produce an explosion. However, the applicants believe, in accord with established theory, that it is the alignment of the nuclei with respect to the charges in each nucleus which ultimately determines the favourable fusion path.

[0079] In order to achieve a higher probability for the second, less hazardous, pathway, the approaching nuclei need to have time to align electrostatically such that the proton-proton separation is at a maximum. This can only be achieved at far lower energies than those found in a thermonuclear bomb. By the use of entities with diminished electron-path-radii, and correspondingly potentially smaller internuclear distances, fusion can be initiated at lower temperatures (and consequently lower energies), allowing for the charge-related alignment necessary to achieve a high probability for the second, tritium-forming, pathway. By introducing deuterium of diminished electron-path-radius into a plasma discharge which is confined within the water

in the vessel itself, fusion may be initiated. Temperatures of the order of 6000 K are obtained within certain plasma discharges and this, coupled with multiple quantum transitions to produce deuterium of diminished electron-path-radius, produces a substantial yield of energy from the two-stage process.

[0080] Another possible but less likely fusion pathway for hydrogen atoms is:



[0081] whereby β^+ is produced as one of the products.

[0082] Embodiments of the invention will now be described by way of example and with reference to the accompanying schematic drawings, wherein:

[0083] FIG. 1 shows an apparatus for carrying out a method in accordance with the invention on a relatively small scale;

[0084] FIG. 2 shows a system for operating and measuring the performance of the apparatus of FIG. 1;

[0085] FIG. 3 shows a circuit diagram high voltage, high frequency switching circuit for the system of FIG. 2;

[0086] FIG. 4 shows an apparatus for carrying out a method in accordance with the invention on a larger scale than that of the FIG. 1 apparatus; and

[0087] FIG. 5 shows a further apparatus for carrying out a method of the invention which includes two cathodes.

[0088] The apparatus of FIG. 1 enables the generation of energy according to the principles of the invention in the laboratory. Any risk of thermal runaway is minimised, whilst demonstrating that the level of energy release from the two stages is far in excess of that which would result from any purely chemical or electrochemical activity. It also enables easy calorimetry, safe ducting away of off-gases, and of subsequent extraction of liquid for titration (to demonstrate that no chemical action takes place during the operation of the apparatus).

[0089] A 250 ml beaker is provided with a glass quilt or expanded polystyrene surround 6 to act as insulation. This can include an inspection cut-out so that the area around the cathode 9 can be observed from outside. The beaker contains 200 ml of water, into which is dissolved a small quantity of potassium carbonate so as to give a solution of approximately 2 mMol strength. A platinum lead wire 1 is earthed to the laboratory reference ground plane. The anode 10, a sheet of platinum foil of approximately 10 mm² in area, is attached to this lead wire by mechanical crimping. A digital thermometer 2 is inserted into the liquid in the vessel. A 0.25 mm diameter tungsten wire cathode 9 is sheathed in borosilicate glass or ceramic tube 4 and sealed at the end immersed in the electrolyte so as to expose 10 mm to 20 mm of wire in contact with the liquid. The entire assembly of lead wires and the thermometer is carried by an acrylic plate 5 which enables of easy dismantling and inspection of the apparatus.

[0090] A supply of up to 360 volts DC, capable of supplying up to 2 amperes, is arranged external to the described apparatus. The positive terminal of this supply is connected to the laboratory reference ground plane and the negative terminal is connected to one pole of an isolated high-voltage

switching unit. The other pole of the switch is connected to the tungsten wire cathode **9** externally of the apparatus.

[0091] To operate the apparatus, the solution **8** is initially brought up to between 40° C. and 80° C. either by preheating outside the apparatus or by passing power through a heating element in the solution (not shown). When the solution is between these temperatures it is either transferred to the above apparatus or, if a heating element is used, this is turned off.

[0092] With all connections made as described, the switch is set to operate at a duty cycle of 1% and a pulse repetition frequency of 100 Hz. It will be seen through the inspection cut-out that an intense plasma-arc is intermittently struck under the water at or near the cathode. If equipment is available to monitor the current drawn, it will be seen that the system consumes in the region of 1 watt when the switching circuits is operating. It will be seen by the rapid rise in temperature in the apparatus that far more energy is being released than can be accounted for by the electrical input. As a comparison, a heater element can be substituted for the electrodes and operated 1 watt and the effects observed. There is really no need for sophisticated calorimetry to verify that large quantities of energy are being released close to the cathode of the equipment, such is the magnitude of the reaction for the process, as compared to a test with a resistive heating element of the same input power.

[0093] The data obtained from a representative one-hour session with this apparatus as shown as Table 1, below:

Pre Run Measurements	
Commencing volume of electrolyte	0.200 l
Commencing temperature of cell	39.200° C.
Laboratory ambient temperature	20.500° C.
Spec. heat capacity of vessel	70.300 J · ° C. ⁻¹
Spec. heat capacity of electrolyte	4180.000 J · l ⁻¹ · ° C. ⁻¹
Steady RMS voltage	4.000 volts
Steady RMS current	0.067 Amps
Post Run Results	
Duration of input	3600.000 secs
Final volume of electrolyte	0.180 l
Final temperature of cell	93.600° C.
Steady RMS voltage	6.700 volts
Steady RMS current	0.122 Amps
Time-averaged power in	0.506 watts
Results Summary	
Vessel Gain	3824.320 Joules
Electrolyte gain	43181.740 Joules
Radiated power	38681.030 Joules
Evaporated loss	48509.240 Joules
TOTAL ENERGY IN	1820.070 Joules
TOTAL ENERGY OUTPUT	134196.300 Joules

[0094] It can be seen from this table that the total energy input during this test was measured at 1820 Joules and, taking as a rough guideline that 200 ml of water requires the input of 838 joules of energy to raise it by 1° C., then by direct heating the water would be expect to rise by some 2° C., bearing in mind radiative losses. In fact, during the experiment the water temperature was raised from 39.2° C. to 93.6° C. and considerable steam was also liberated. Furthermore, the calculated energy output of 134196 Joules

does not take account of secondary effects such as light-energy output and Faradaic electrolysis.

[0095] A system suitable for operating the apparatus of FIG. 1 is illustrated in a block diagram in FIG. 2. A pulse generator **20** supplies a variable duty-cycle pulse waveform to a high voltage switch unit **22**. The pulse waveform may be monitored on an oscilloscope **24** and its repetition frequency is displayed on a first frequency counter **26**. A second frequency counter **28** is provided to monitor the clock speed of the switch unit **22**. Power supply **30** is operable to apply a voltage between 0 and 360 V to an electrode of the apparatus **12**, shown in FIG. 1. The voltage level may be read from a digital multimeter **32**. The RMS voltage across the electrodes **9** and **10** is indicated on a multimeter **34** and the RMS current passing between the electrodes is shown on another multimeter **36**, by measuring the voltages developed across a 1 ohm resistor **37**. The temperature in the apparatus **12** is indicated on a dip temperature probe **38**. The switch unit **22** may be bypassed by a push button switch **39** to apply a constant voltage across the electrodes.

[0096] A circuit diagram of the switch unit **22** is shown in FIG. 3. In the system of FIG. 2, input **40** is connected to the output of pulse generator **20**. The output **42** of the switch unit is connected to the cathode of the apparatus **12**. Two NAND gates **44** and **46** are two fourths of a Schmitt-trigger 2 input NAND gate chip type **4093**. NAND gate **44** operates as an astable multivibrator, with its repetition frequency set by a preset resistor **45**. The output of gate **44** is fed to one input of NAND gate **46**, the other input forming circuit input **40**. The output of NAND gate **46** is connected to a three transistor amplifier consisting of transistors **48**, **50** and **52**. The amplifier is in turn connected to one end of the primary of a transformer **54**, the other end being connected to earth. The transformer output is fed to a bridge rectifier formed from diodes **56**, **58**, **60** and **62**.

[0097] The rectifier output is fed via a resistor **64** to the gate of an insulated gate bipolar transistor **66** (IGBT). The load of the apparatus **12** is connected in the drain circuit of the IGBT. A 15 kV diode **68** is connected between the drain and the source of the IGBT **66** to protect the IGBT from the sizeable EMI emissions from plasma discharges in the apparatus **12** and avoids damage to this sensitive semiconductor. A further diode **70** is provided between the drain of the IGBT and the circuit output **42** to act as an EMI blocker in a similar way. A standard 20 mm 5A quick-blow fuse **69** is connected between the source of the IGBT and ground in order to protect the device against overcurrent.

[0098] The operation of the circuit of FIG. 3 is as follows. The repetition frequency is NAND gate **44** is preferably set to between 4 and 6 MHz. Pulse generator **20** is adjusted to set the duty of the switching. On receipt of an external pulse from the generator, NAND gate **46** passes a packet of 4 to 6 MHz square waves to the amplifier. The amplifier has considerable current gain and enables the primary of the transformer **54** to be driven resonantly with the RC circuit formed by capacitor **72** and resistor **74** which are connected in parallel therewith. The transformer **54** has a step-up ratio of 2:1 and a 4 to 6 MHz signal of approximately 19 volts appears across the bridge rectifier. The impedance of the rectifier output is essentially determined by a parallel resistor **76**, such that the switch-on and switch-off time of the

IGBT **66** is very fast. Thus, there is never a point in the operation of the device when it is dissipating any measurable power. The load of the apparatus **12** is placed in the drain circuit of the IGBT, which is therefore operating in “common-source” made to ensure that its source terminal never rises above high-side ground potential. This, again, is a configuration which uses excess input power. This circuit ensures a rise time of the switched waveform which is less than 10 nS and a fall time which can be as low as 30 nS at modest supply voltages.

[0099] Preferred component values and types for the circuit of FIG. 3 are as follows:

- [0100] Transistor **4**, **50**—2N 3649
- [0101] Transistor **52**—2N 3645
- [0102] Diodes **56**, **58**, **60**, **62**—BAT85 Schottky
- [0103] Transformer **54**—RS195-460
- [0104] IGBT **66**—GT8Q101
- [0105] Diode **68**—15 kv EHT
- [0106] Diode **70**—1N1198A

Resistor	Value (Ω)	Capacitor	Value
47	1.8k	49	10 pF
51	33	55	33 nF
53	220	72	22 pF
74	56		
76	560		
64	56		

[0107] A second apparatus for carrying out the invention is illustrated in FIG. 4. This apparatus comprises a tubular chamber **80**, which may be constructed from a nonmagnetic metal or metal alloy material such as, but not exclusively, aluminium or Duralumin, or may alternatively be constructed from a non-permeable ceramic material or from borosilicate glass. The tubular chamber **80** is constructed in flanged form to allow of its incorporation into a system of pipework via flanges **82** and **84** and gaskets **86**. Entering the chamber **80** are two electrodes, the cathode **88** being sheathed in an insulating glass or ceramic tube **90** and shaped so as to present itself along the axis of the chamber **92**. The anode **94** is connected to a similar insulated wire **96** and is shaped so as to present a circular plate opposite the cathode **88**. The distance between the cathode tip and the anode plate should be approximately equal to the radius of the chamber **80**. The cathode may be constructed from tungsten, zirconium, stainless steel, nickel or tantalum, or any other metallic or conductive ceramic material which may contribute to, or occasion, the dissociative process described above. The anode may be constructed from platinum, palladium, rhodium or any other inert material which does not undergo any significant level of chemical interaction with the electrolyte.

[0108] Surrounding the chamber **80**, and concentric with it, is a winding **98** of enamelled copper or silver wire of diameter 0.1 to 0.8 mm consisting of up to several thousand turns of the wire. The purpose of this winding **98** is to create an axial magnetic field inside the chamber **80**.

[0109] Electrolyte comprising deuterium oxide, in combination with ordinary “light” water in varying proportions, and containing high-molarity salts of, but not exclusively of, potassium, rubidium or lithium, or combinations of such salts, is pumped through the chamber **80**, in a direction such that the anode is downstream of the cathode.

[0110] The anode lead wire **96** is connected to the ground plane or zero volts. The cathode **88** is connected to a variable source of between 50 and preferably 2000 volts negative with respect to the grounded anode **94**, but may be coupled to a voltage of up to several tens of thousands of volts negative with respect to such anode **94**. To enhance performance of the invention, the negative voltage may be supplied in the form of pulses having a duty cycle between 0.001 and 0.5.

[0111] The winding **98** is energised with an alternating voltage such as to provide a current flow of typically between 0.5 and 1.5 amps initially. The frequency of the applied alternating voltage should be variable from DC up to 15 kHz and may, in addition, be synchronous with pulses applied to the cathode **88**.

[0112] Under these conditions, a plasma arc will strike close to the cathode **88**. The intensity and frequency of the current flowing in winding **98** may be adjusted to provide for the removal of the plasma arc from the immediate vicinity of the cathode **88** to avoid excessive evaporation of the material from the cathode **88**.

[0113] The volume of electrolyte pumped through chamber **80** and past the plasma arc may be varied such as to stabilise the temperature of such electrolyte in a closed system at below at its boiling point.

[0114] Heat may be extracted from the electrolyte by passing it through a heat exchanger before its re-introduction into the chamber **80**. Provision may be made to top-up the water/deuterium content of the electrolyte as this becomes depleted by operation of the apparatus. The system may operate at a range of pressures to facilitate heat removal.

[0115] A further apparatus for carrying out the invention, similar to that of FIG. 4, is shown in FIG. 5 on a scale of approximately 1:2.5. It comprises a borosilicate reaction tube **100** supported at one end on a machined nylon support bridge **102**. A second machined nylon element **104** is mounted across the other end of the tube. The bridge **102** and element **104** are clamped against the tube **100** by 8 mm threaded stainless steel studs **110**.

[0116] A first cathode **106** is in the form of a nickel wire mesh. It is mounted towards one end of tube **100** on a stainless steel support **108**. Electrical connection to the first cathode **106** is via a PVC-sleeved wire (not shown).

[0117] A second cathode **112** consists of an 0.5 mm diameter length of tungsten wire provided within a drilled macor ceramic sheath **114**, which is in turn placed within a 10 mm stainless steel tube **116**. Tube **116** passes through the support **102** and has a perspex end cap **118** on the external end through which the second cathode **112** passes. A PVC funnel **120** is provided around the second cathode and is tapered towards it, with the cathode tip adjacent the narrower open end thereof. The funnel is supported on sleeves **121** provided on the stainless steel support **108**.

[0118] The anode comprises an 0.25 mm diameter platinum wire **122** which is connected at one end within the tube **100** to a sheet of platinum foil **124**. Like the second cathode **112**, the anode is provided within a 10 mm diameter stainless steel tube **126**, which passes through nylon element **104** and is closed at its external end by a perspex end cap **128**. Platinum wire **122** passes through the end cap **128**.

[0119] A plasma deflection coil **130** is mounted within tube **100** between the anode **124** and cathodes **106**, **112**. Electrical power is fed to the coil via connectors **132**.

[0120] Electrolyte is supplied to the tube **100** via a brass inlet **134** provided through the support bridge **102** and flows out through nylon element **104** via a brass outlet **136**. An additional brass outlet **138** is also provided in nylon element **104** to allow the electrolyte to be sampled during operation of the apparatus. Fuse holders and cable connectors for the apparatus are provided in a unit **140** mounted on the support bridge **102**.

[0121] The apparatus of **FIG. 5** is operated in a similar manner to that of **FIG. 4**, as discussed above. The primary distinction is that two cathodes **106**, **112** are employed in place of a single cathode. In use, electrolyte is fed through the tube **100**, past the electrodes, from inlet **134** to outlet **136**. A pulsed voltage is applied to the first cathode **106** such that a layer of metal hydride is formed on its surface during the voltage pulses and subsequently dissociates to form nascent monatomic hydrogen/deuterium. The applied voltage characteristics are selected to optimise the production rate of the monatomic hydrogen/deuterium. These products are channelled towards the second cathode **112** by the funnel **120**. A voltage is applied to the second cathode **112** to generate a plasma discharge thereat.

[0122] The characteristics and magnitudes of the voltages applied to the first and second cathodes may be similar, but it may be advantageous for different duty periods to be employed for respective cathodes. This cathode arrangement with the second cathode downstream of the first seeks to maximise contact between the monatomic hydrogen/deuterium and the plasma and therefore the efficiency of the apparatus. This is further assisted by the funnel **120**.

What is claimed is:

1. A method of releasing energy comprising the steps of providing an electrolyte having a catalyst therein, the catalyst being suitable for initiating transitions of hydrogen and/or deuterium atoms in the electrolyte to a sub-ground energy state, and being one of rubidium ions or potassium ions and having a concentration of between 1 mMol and 20 mMol, and generating a plasma discharge in the electrolyte, wherein the plasma discharge is generated by applying a voltage across electrodes in the electrolyte of between 50V and 20,000V.

2. The method of claim 1 wherein the voltage is applied so as to produce an intermittent plasma discharge.

3. The method of claim 1 wherein the applied voltage has a substantially square shaped waveform.

4. The method of claim 1 wherein the applied voltage has a pulsed waveform having a duty cycle between 0.001 and 0.5.

5. The method of claim 1 wherein the voltage is switched on and off by a switching assembly comprising an insulated gate bipolar transistor.

6. The method of claim 1 wherein the applied voltage has a waveform having a frequency of between DC and 100 kHz.

7. The method of claim 1 wherein a metal hydride is formed on an electrode which dissociates to form hydrogen and/or deuterium atoms.

8. The method of claim 1 wherein the metal hydride is formed on an electrode during voltage pulses and subsequently dissociates to form hydrogen and/or deuterium atoms.

9. The method of claim 1 wherein the current density generated by the applied voltage is 400,000 A/m² or above.

10. The method of claim 1 and further comprising the step of feeding the electrolyte past the electrodes.

11. The method of claim 1 and further comprising generating a magnetic field in the region of the electrodes.

12. The method of claim 2 wherein a cathode electrode comprises tungsten, zirconium, stainless steel, nickel and/or tantalum.

13. The method of claim 2 wherein the anode electrode is formed of a material which is inert with respect to the electrolyte.

14. The method of claim 16 wherein the anode comprises platinum, palladium and/or rhodium.

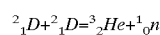
15. The method of claim 2 wherein the temperature of the plasma is approximately 6000K or above.

16. The method of claim 2 wherein the electrolyte comprises water and/or deuterated water and/or deuterium oxide.

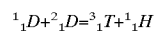
17. The method of claim 21 wherein the only reactive ingredient consumed by the reaction is water or deuterated water.

18. The method of claim 2 and further comprising the step of heating the electrolyte to a temperature between 40 to 80° C. prior to generating the plasma discharge.

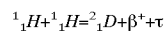
19. The method of claim 2 wherein fusion occurs via at least one of the following pathways:



or



or



20. A method of releasing energy comprising the steps of providing an electrolyte having a catalyst therein, the catalyst being suitable for initiating transitions of hydrogen and/or deuterium atoms in the electrolyte to a sub-ground energy state and being capable of absorbing approximately (m*27.2)eV, where m is an integer, the catalyst being one of rubidium ions or potassium ions and having a concentration of between 1 mMol and 20 mMol, and

generating a plasma discharge in the electrolyte, wherein the plasma discharge is generated by applying a voltage across electrodes in the electrolyte of between 50V and 20,000V.

* * * * *