

ESG-150 Electric steam-generator set 100kW – up to 150kg/hr

 eshop.czechminibreweries.com/product/esg-150/

€ 13 945 excluding tax

Electric and automatic hot steam-generator set with power from 25 kW up to 100 kW (from 38 up to 150 kg of hot steam per hour). Electric and automatic system for the hot steam production consists of the steam generator unit and accessories. Water feed can be connected directly to the water mains or to a condensate tank. Regulation of the working steam pressure is adjustable in range from 1 to 7 bar.



Every steam-generator is equipped with two independent sets of stainless steel heaters 4×25 kW. The steam-generator shell is manufactured in accordance to the current PED regulations.

SKU: ESG-150 Categories: [ESG : Electric steam generators](#), [SGS: Steam generators](#) Tag: [steam-generators](#)

- [Description](#)
- [Additional information](#)
- [Reviews \(0\)](#)



Description

Electric and automatic hot steam-generator

with power from 25 kW up to 100 kW (from 38 up to 150 kg of hot steam per hour), steam pressure from 1 to 7 bar

Electric and automatic system for the hot steam production consists of the steam generator and accessories. Total available power from 25 kW up to 100 kW. Water feed can be connected directly to the water mains or to a condensate tank. Regulation of the working steam pressure is adjustable in range from 1 to 7 bar.

Every steam-generator is equipped with two independent sets of stainless steel heaters 4×25 kW. The steam-generator shell is manufactured in accordance to the current PED regulations.

Made in Italy

Recommended usage :

- Heating of brewhouses – recommended for brewhouses with maximal usage volume from 1000 to 2000 liters per one brew
- Heating of hot water in heat water tanks – boilers
- Sterilization of vessels, pipes, hoses and food equipment or farmacy equipment by hot steam

Parameters and accessories :

- Power from 25 kW up to 100 kW / from 38 to 150 kg of hot steam per hour
- Working pressure and temperature of steam max. 6 bar / 155°C
- Water treatment unit with automatic regeneration – capacity of ionex 80 liters
- Particulate filter
- Stainless steel condensate tank
- Four sets of heaters.
- High temperature pump – 2pcs
- Sound intensity level < 70 dB(A)
- Boiler body made of steel (optionally stainless steel AISI 304)
- Boiler capacity 2×57 L
- Boiler heater 25 – 100 kW
- Safety overpressure valve 7 bar
- Adjustable relief valve for outgoing steam
- Built-in electric switchboard cabinet
- Built-in centrifugal pump
- All components in contact with water in stainless steel AISI 304
- Power supply 230/400V – 3ph – 50 Hz
- Working temperature + 5 ÷ + 80 °C
- Net dimensions 800 x 800 x 1200 mm.
- Net weight 260 Kg
- Overall dimensions (packaging included) 1000 x 1000 x 1500 mm
- Gross weight (packaging included) 300 Kg

Warranty : 12 months

Delivery time : from 3 days to 6 weeks (according store status)

Recommended accessories

Recommended set of spare parts to ensure non-interrupted functionality in operation 2990 Eur

This set includes :

- Electric heating element 25 kW + gasket ... 4 pcs
- Main contactor ... 2 pcs
- Fuse 50A ... 12 pcs
- Glass pipe (fill level indicator) ... 4 pcs
- PQM pump ... 2 pcs
- Pressure switch ... 2 pcs
- Pump solenoid ... 2 pcs
- Boiler float + gasket ... 2 pcs
- Condensate tank float ... 1 pc
- Valve of the filling level indicator ... 2 pcs

- Condensate tank thermostat ... 1 pc
- Manometer 0-10 bar ... 2 pcs
- One no-return valve ... 2 pcs

Stainless steel basic frame for the installation in wet space ... 350 Eur

Stainless steel frame under the steam generator with adjustable feet

Additional information

Weight 300 kg

Dimensions 1000 × 1000 × 1500 mm

Only logged in customers who have purchased this product may leave a review.

Related Products

ESG-16 Electric steam-generator 16kg/hr

Electric and automatic steam-generator, available from 7 to 15 kW. Water feed can be connected directly to the water mains or to a condensate tank. Regulation of the working steam pressure is adjustable between 0.3 and 7 bar. The steam-generator shell is manufactured in accordance to the current PED regulations.

not rated € 5 878 excluding tax [Add to Cart](#)





GSG-300 Gas steam-generator 300kg/hr

Automatic gas steam-generator, available power 226 kW – The production capacity from 150 to 300 kg of hot steam per hour . Water feed can be connected directly to the water mains or to a condensate tank.

Regulation of the working steam pressure is adjustable in range from 1 and 4.7 bar. This steam-generator is equipped with gas burner RIELLO RS 4DF MBZRDLE 412g – gas inlet pressure 2-36 kPa. The steam-generator shell is manufactured in accordance to the current PED regulations.

not rated € 28 555 excluding tax [Add to Cart](#)



ESG-120MWT Electric steam-generator compact 120kg/hr

The compact and automatic electric steam-generator, available power from 20 kW to 80 kW (26-120 kg of hot steam per hour). Water feed can be connected directly to the water mains or to a condensate tank. Regulation of the working steam pressure is adjustable in range from 1 to 6 bar. This steam-generator is equipped with two independent sets of stainless steel heaters $2 \times 20 \text{ kW} + 2 \times 20 \text{ kW}$. The steam-generator shell is manufactured in accordance to the current PED regulations.

The water treatment system (for automatic water softening) and electric switchboard cabinet is included in this set. All system is mounted on the stainless steel frame. Easy installation – without electrician works – it is needed only to plug on the electric power socket on the wall.

Made in Italy

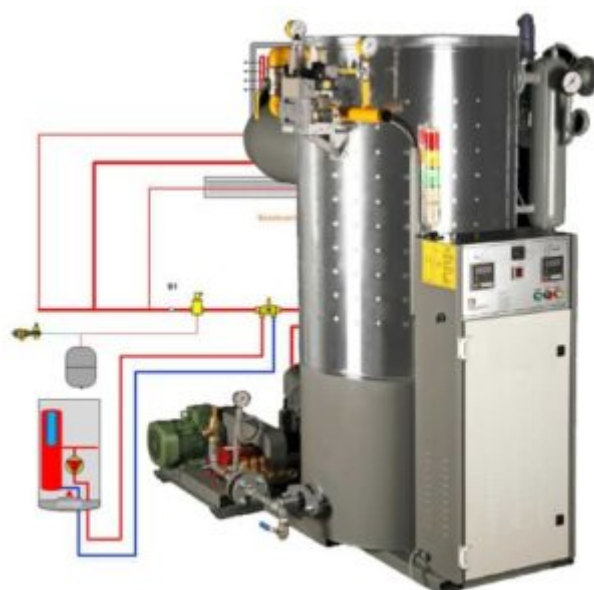
not rated € 15 580 excluding tax [Add to Cart](#)



BR-GSG-1000-16 : Boiler room with the Gas steam-generator 1000kg/hr (max. 16bar).

Fully equipped boiler room with the automatic gas steam-generator, available power 700 kW. Water feed can be connected directly to the water mains or to a condensate tank. Regulation of the working steam pressure is adjustable in range from 1 to 16 bar. The machine complies with EU Directive 97/23 EC (PED) and Module H1, CE

not rated € 67 571 excluding tax [Add to Cart](#)





GSG-100 Gas steam-generator 100kg/hr

Automatic gas steam-generator, available power 75 kW – The production capacity from 50 to 100 kg of hot steam per hour. Water feed can be connected directly to the water mains or to a condensate tank. Regulation of the working steam pressure is adjustable in range from 1 to 4.7 bar. This steam-generator is equipped with gas burner RIELLO RS 4DF MBZRDLE 412g – gas inlet pressure 2-36 kPa. The steam-generator shell is manufactured in accordance to the current PED regulations.

not rated € 22 286 excluding tax [Add to Cart](#)



ESG-360 Electric steam-generator set 240kW – up to 360kg/hr

Electric and automatic hot steam-generator set with power from 20 kW up to 240 kW (from 30 up to 360 kg of hot steam per hour). Electric and automatic system for the hot steam production consists of three joined steam generator units. Water feed can be connected directly to the water mains or to a condensate tank. Regulation of the working steam pressure is adjustable in range from 1 to 7 bar.

Every steam-generator is equipped with two independent sets of stainless steel heaters 12×20 kW. The steam-generator shell is manufactured in accordance to the current PED regulations.

not rated € 39 488 excluding tax [Add to Cart](#)



ESG-26MWT Electric steam-generator compact 26kg/hr

Electric and automatic hot steam-generator ESG-26MWT with power from 9 kW to 18 kW (from 12 to 26 kg of hot steam per hour), steam pressure from 1 to 4.5 bar. The Modulo ESG system includes water treatment set, electric switchboard cabinet and all pipe&electric connections.

Electric and automatic steam-generator, available power from 9 kW to 18 kW. Water feed can be connected directly to the water mains or to a condensate tank. Regulation of the working steam pressure is adjustable in range from 1 to 4.5 bar. This steam-



generator is available with a single or two independent heaters . The steam-generator shell is manufactured in accordance to the current PED regulations. The water treatment system (for automatic water softening) and electric switchboard cabinet is included in this set. All system is mounted on the stainless steel frame. Easy installation – without electrician works – it is needed only to plug on the electric power socket on the wall.

not rated € 8 190 excluding tax [Add to Cart](#)



ESG-240 Electric steam-generator set 160kW – up to 240kg/hr

Electric and automatic hot steam-generator set with power from 20 kW up to 160 kW (from 30 up to 240 kg of hot steam per hour). Electric and automatic system for the hot steam production consists of two joined steam generators. Water feed can be connected directly to the water mains or to a condensate tank. Regulation of the working steam pressure is adjustable in range from 1 to 7 bar.

Every steam-generator is equipped with two independent sets of stainless steel heaters 8×20 kW. The steam-generator shell is manufactured in accordance to the current PED regulations.

not rated € 24 095 excluding tax [Add to Cart](#)

