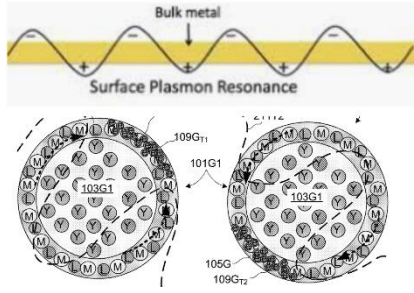
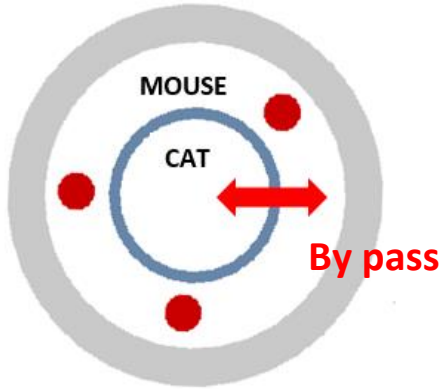
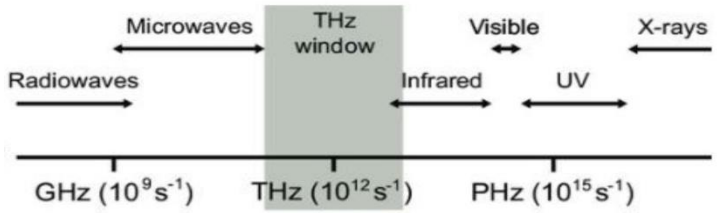
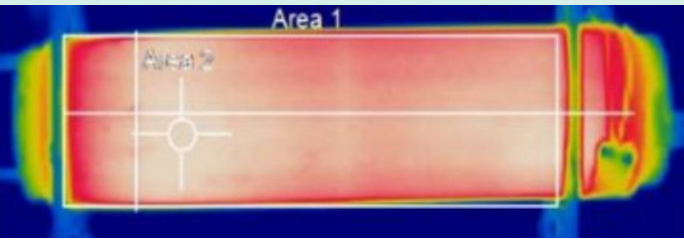


SECRETS OF E-CAT

David FOJT, France, independent researcher
 Email:



These Metal particles are composed by an inert core (ceramics) coated by a porous metal layer (iron) to increase electrons clusters at surface created by IRs.

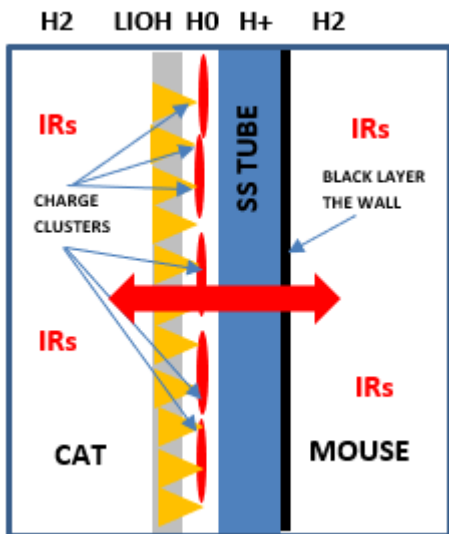
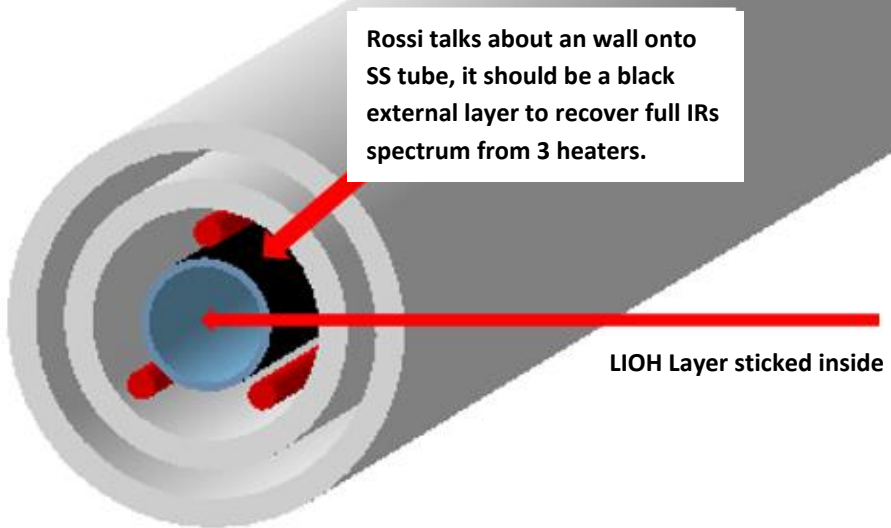
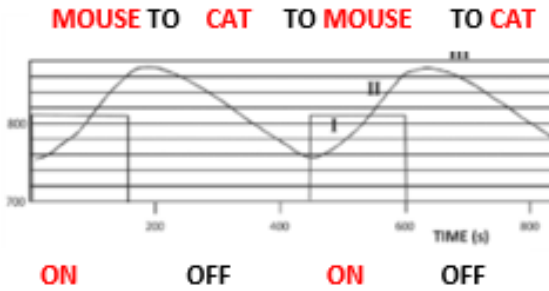
Same principle as inside recent Google patent.

Metal particles are drowned inside LIOH layer in Ecat HTs case.

- 1 : Fuel is filled in central SS tube The CAT
- 2 : Above 750° H2 leaks across SS tube to external compartment THE MOUSE, liquid LIOH layer is stucked close to internal SS tube face by H2 flux.

- 3 : H2 from THE MOUSE returns across SS tube to THE CAT by heaters ON, and becomes H+ then H0 at internal SS face where is stucked LIOH layer.

This trap principle has been described more recently too by Mizuno's R20. This double compartment principle separated by an membrane has been resumed recently in an IH patent too.



Following principle here, at right, IRs irradiates internal SS tube face to generate surface plasmons inside fine LIOH layer where H0 are trapped (electronic clusters) as described more recently in Google patent or Chauvin's patent. H0 layer is regenerated here at each Cat/mouse cycle.

